



**ECCO**  **PRODUCTS**

# **INNOVATIVE OUTDOOR SOLUTIONS**



[WWW.ECCOPRODUCTS.EU](http://WWW.ECCOPRODUCTS.EU)





## YOUR PROJECT. OUR PRODUCTS.

**ECCO PRODUCTS** is a **trendsetter** and **manufacturer** of water permeable **solutions for outdoor spaces**. Together with our partners we **strive towards a greener future**.

We have a clear mission: we want to make an area of **20 million m<sup>2</sup> water-permeable** by 2025. Moreover, we will double this amount every five years.

Choosing ECCO, is choosing a company that **invests** in three things:

- + **In the development of ecological products** that provide a solution to today's water issues.
- + **In people**. Our employees are the foundation of everything we do. That is why we, as a company, invest in their personal growth, that will enrich them professionally as well as personally.
- + Finally, we invest in **relationships**, with our suppliers, customers and partners. Honesty and integrity is key to these relationships.

These are not just empty words. We can prove that this has resulted in a success story, because ECCO

- + **grows faster** than its competitors ...
- + and has a **reliable customer network**. Our customers describe us as an established and highly regarded company with a wide range of products. They regard us as a company that they can count on.

This commercial network is supported by powerful and innovative marketing tools.

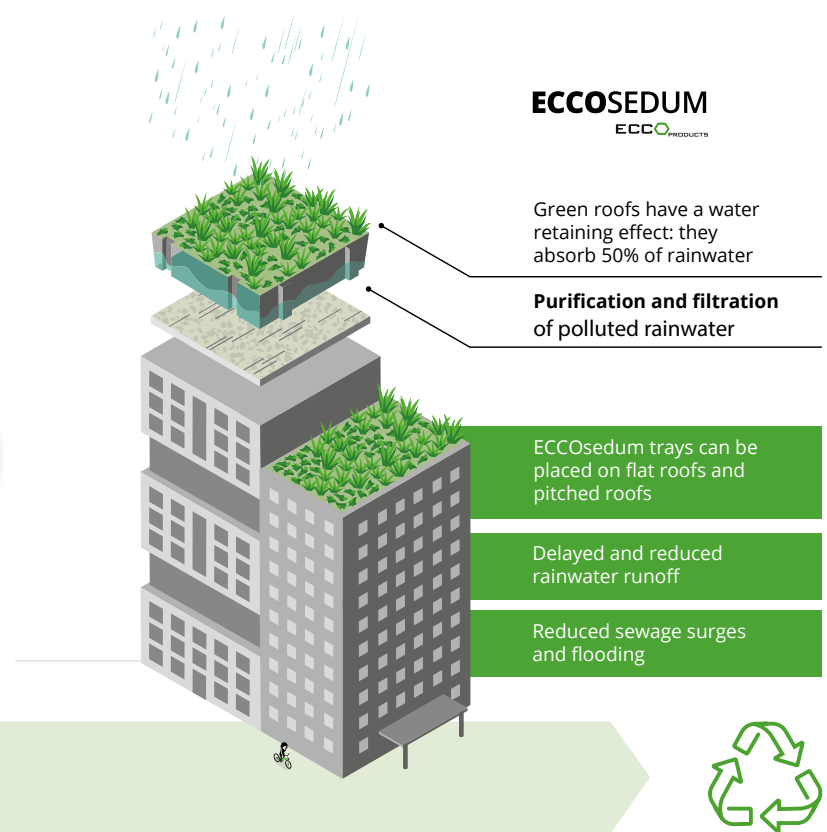


# Together we can really infiltrate the planet.

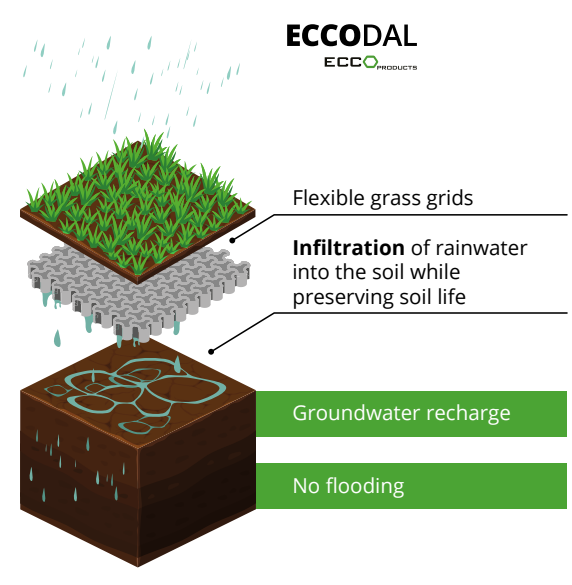
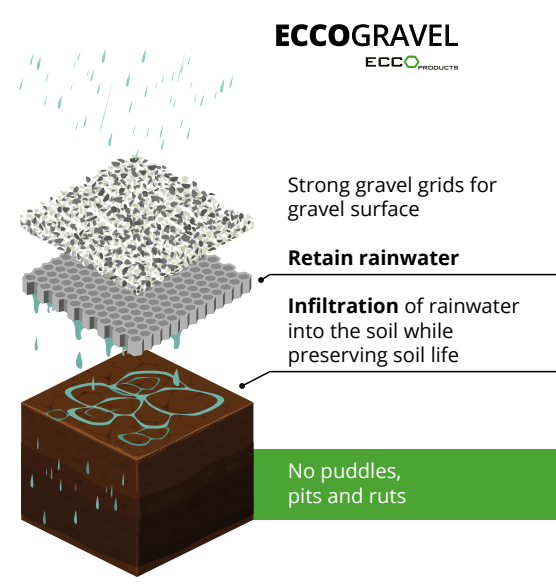
With these solutions for water control from  
**ECCO** PRODUCTS



## PERMEABLE SURFACE

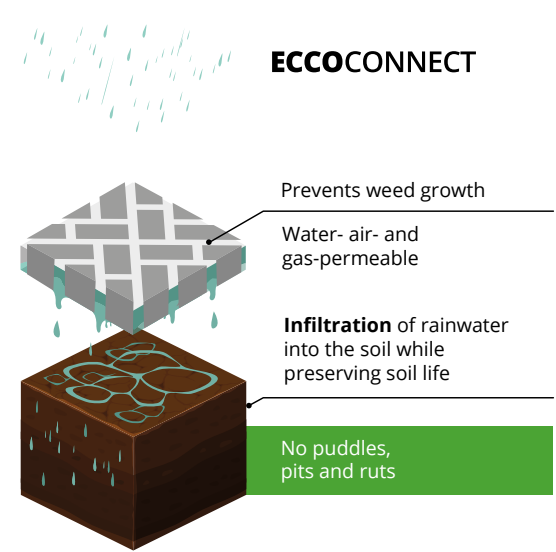
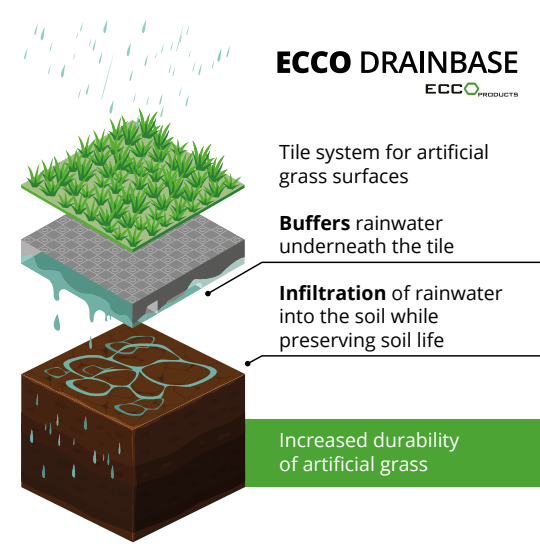


## PERMEABLE SURFACE



THESE SYSTEMS ARE MAXIMALLY RECYCLED AND 100% RECYCLABLE

<p>Protection and enrichment of biodiversity</p>	<p>Efficient sound insulation</p>	<p>Optimised efficiency of solar panels</p>	<p>Positive effect on work satisfaction &amp; productivity</p>
<p>Longer lifespan than ordinary roofing</p>	<p>Positive effect on mood &amp; physical health</p>	<p>Optimisation of thermal isolation</p>	<p>Financial benefit</p>







# ECCOGRAVEL

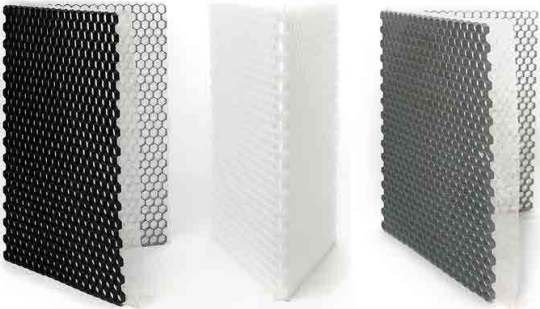
ECCO PRODUCTS

## Strong, frost-resistant gravel grids in HDPE

For a perfectly permeable surface in accordance with the highest quality standards

### INFO

- + Frost- and UV-resistant gravel grid in HDPE with high compressive strength and impact value
- + Increased resistance against torsional loads thanks to plastic reinforcements between the cells
- + Attached weed membrane made from polyester, open structure enables drainage whilst remaining strong and will not deteriorate over time.
- + Very user-friendly: easy and quick to transport thanks to foldable format
- + Eliminates accessibility issues associated with gravel surfaces
- + Creates a smooth surface which is perfectly walkable and rideable



## INSTALLATION

### 1. FOUNDATION

Limestone rubble, porphyry rubble, or crushed concrete rubble (chip size: 0-32 mm or 0-40 mm). We advise against brick rubble, as it pulverises over time.

### 2. LEVELLING LAYER

The levelling layer may consists of:

- + Sharp sand
- + Limestone or porphyry 2-4 mm, 1-3 mm, 0-4 mm

### 3. GRAVEL GRID

A deeper gravel grid provides a better load distribution onto the foundation.

### 4. TOP LAYER

The honeycomb structure should be covered with gravel (chip size 4-16 mm). For finer gravel types this will be about 1 cm, for coarser types 2 cm.

## SPECIFICATIONS

- ✂ GRID DIMENSIONS: 80 x 120 cm (ECCOgravel 20)  
160 x 120 cm (ECCOgravel 30 & 40)
- GRID HEIGHT: 2 cm (ECCOgravel 20)  
3 cm (ECCOgravel 30)  
4 cm (ECCOgravel 40)

∅ DIAMETER honey comb: 43 mm

□ DENSITY HDPE: 0.95 g/cm³

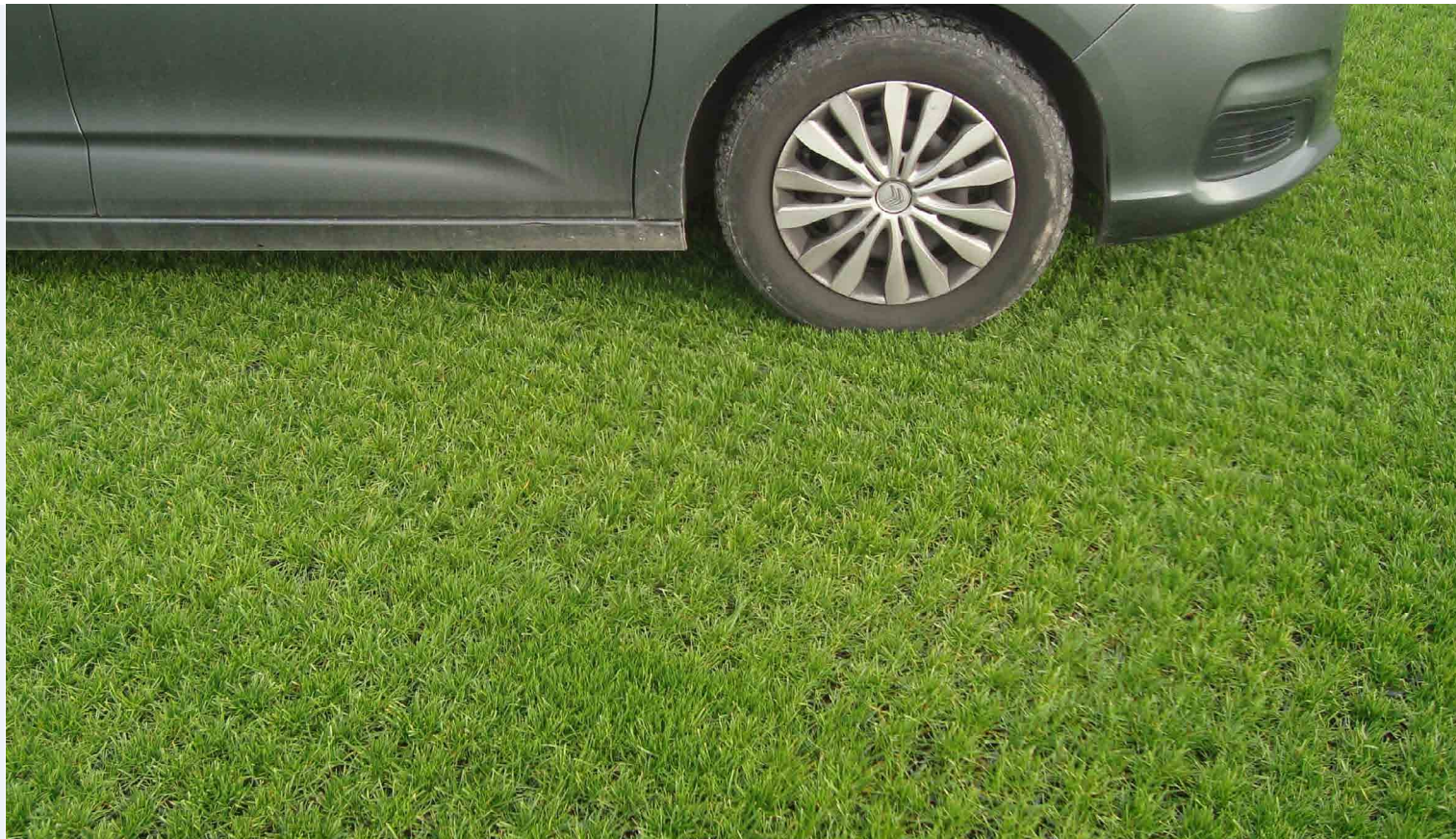
⊞ MATERIAL honey comb: 100% HDPE

⇅ COLOUR: white, grey or black

📦 COMPRESSIVE STRENGTH ECCOGRAVEL 30 & 40:  
EMPTY: ISO 844 - 90 tonnes/m²  
FULL: ISO 844 - up to 400 tonnes/m²

⚙ APPLICATIONS	20	30	40
Garden and foot paths	✓	✓	✓
Terraces	✓	✓	✓
Driveways and parking areas		✓	✓
Fire roads		✓	✓
Campsites, ...		✓	✓





## ECCOdal is a strong grass grid

**Made from recycled materials (PE-PP). The grass grid is equipped with internal expansion joints for absorbing thermal and mechanical tension.**

### INFO

- + Grass grid in PE-PP: high compressive strength, high impact value and frost-resistant
- + Quickly installed thanks to its convenient dimensions 80 x 80 cm
- + Creates a smooth surface which is perfectly walkable and driveable
- + Belgian quality product
- + Expansion joints to absorb temperature variations

### APPLICATIONS

- + Green parking areas, driveways, carports
- + Walkways and garden paths, campsites
- + Fire roads, bank reinforcement
- + Paddocks, horse arena's, ...

## INSTALLATION

### 1. FOUNDATION

The foundation case can consist of: lava, limestone rubble, porphyry rubble or crushed concrete rubble (chip size distribution: 16-32 or 20-40 mm).Hollow spaces (about 80%) should be filled with topsoil.

### 2. SUBSTRATE LEVELLING LAYER

The substrate levelling layer may consist of: lava (0-4 mm)

### 3. GRASS GRID

A deeper gravel grid provides a better load distribution onto the foundation.

### 4. TOP LAYER

Add the substrate to the ECCOdal grass grids up to 1 cm (max 0.5 cm) from the edge of the grid (that way, the growing area of the grass is protected in the grid). Add the grass to the grass grids (preferably grass with long roots, e.g. Festuca arundinacea). You can use a self-compacting substrate, that way you no longer need to brush out anything as the substrate will compact naturally.

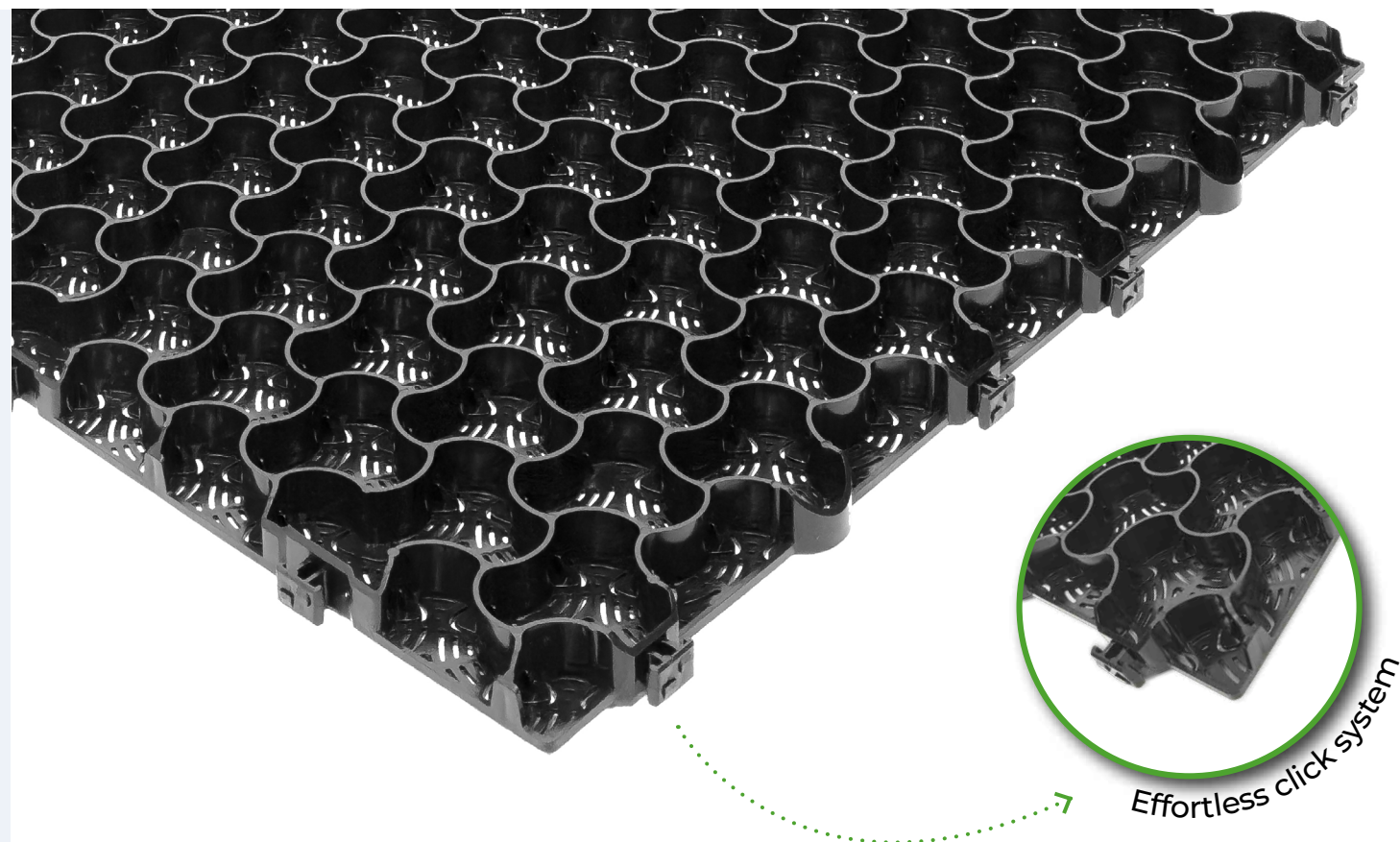
Every project is unique. These instructions are merely advisory.

## SPECIFICATIONS

-  COMPOSITION  
100% recycled materials (PE-PP)
-  LENGTH (excl. connections): 80 cm  
WIDTH (excl. connections): 80 cm  
HEIGHT: 4 cm or 5 cm
-  WEIGHT PER GRID: 3,17 kg / 4,95 kg/m<sup>2</sup> (4 cm) or 3,90 / 6,10 kg/m<sup>2</sup> (5 cm)
-  SIDE THICKNESS: 3,5 - 4 mm
-  COLOUR: green with grey nuances or black







## Frost-resistant gravel/grass grid in HDPE with high pressure resistance

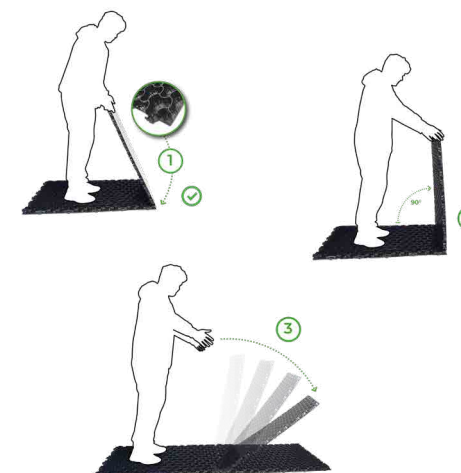
Ideal for intensive and frequent traffic

### INFO

- + Ergonomic and fast installation thanks to the effortless click system
- + Designed for filling with grass or gravel
- + Suitable for all gravel types with a fraction up to 25 mm
- + Resistant to high pressure: withstands heavy loads
- + Ideal for intensive and frequent traffic
- + Closed bottom for stability, yet highly permeable
- + Sustainability: 100% recyclable HDPE
- + Suitable for sloping areas (up to 20%)
- + Maintenance-friendly
- + Available in 2 colours: black (100% recycled material) or white\*

### INSTALLATION

1. Position the first Multidal parallel to the demarcation.
2. With the new click system, you easily connect the next grid. If you need to, you can also disconnect it.
3. We recommend to install the grids in half-brick bond. Start the second row with half a grid, Multidal is easy to cut with a grinding wheel.
4. Start the third row again with a full grid. Finish the entire surface in this way so the installation is half-brick.



### SPECIFICATIONS

- ✚ COMPOSITION:  
100% HDPE - High Density Polyethylene
- ✚ DIMENSIONS: 113.2 x 78.3 cm (0.89m²)  
HEIGHT: 3 cm
- ⚖ BREAKING STRAIN, UNFILLED:  
300+ ton/m²
- ⚖ WEIGHT: 3,75 kg
- ⚡ COLOUR: black or white\*

(\*) The Multidal plates in the colour white may contain traces of the black color at the injection points. This has no influence on the quality of the product and will no longer be visible after filling.







# ECCOMARKERS

ECCO PRODUCTS

The perfect solution for demarcating your parking space  
in a clear and modern way

## ECCODAL MARKERS

ECCO PRODUCTS

APPLICABLE WITH ECCODAL



Rectangular fit for application with ECCOdal. The markers are specifically designed to clip firmly in the grid.



## ECCOGRAVEL MARKERS

ECCO PRODUCTS

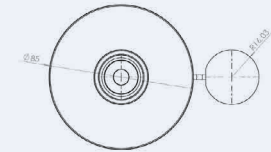
APPLICABLE WITH ECCOGRAVEL





ECCOMarkers are always delivered with an accompanying screw (suitable for fixing in screed, stabilised sand or concrete).

### SPECIFICATIONS ECCOGRAVEL MARKERS




-  DIMENSIONS  
Marker: ø 85 mm (cover cap: ø 32 mm)  
Screws included: TX30 7,5 x 212 mm

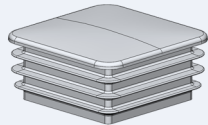


-  COLOUR: white and black  
Made of polypropylene carbonate (PPC)
-  The screws included are galvanised.

ECCOMarkers are always delivered with an accompanying screw (suitable for fixing in screed, stabilised sand or concrete). Around 8 to 10 markers are needed per parking space.

### SPECIFICATIONS ECCODAL MARKERS

-  DIMENSIONS 74 mm x 74 mm (top of the marker)
-  COLOUR: white
-  Made of polypropylene carbonate (PPC)







# ECCODAL HD FLEX

ECCO PRODUCTS

## ECCOdal HD Flex is a solid and flexible grass grid

Made from recycled materials (PE-PP)

### INFO

- + Ecological: 100% recycled and 100% recyclable
- + Unique and innovative shape for an aesthetic and uniform result after installation
- + Cell structure can perfectly absorb all thermal expansions
- + Thicker cell walls for increased torque resistance
- + More than 6 strong connections per meter between the grids
- + Large contact area at the bottom ensures better load distribution
- + Can also be placed in running bond for extra strength of the entire structure

### APPLICATIONS

- + Driveways with grass and parking places
- + Fire roads
- + Walkways and garden paths
- + Campsites, paddocks, horse arena's, ...

### INSTALLATION

#### 1. FOUNDATION

The foundation can consist of: lava, limestone pebbles, porphyry pebbles or crushed concrete rubble (chip size: 16-32 or 20-40 mm). Hollow spaces (about 80%) should be filled with topsoil.

#### 2. SUBSTRATE LEVELLING LAYER

The substrate levelling layer may consist of: lava (0-4 mm)

#### 3. GRASS GRID

The grass grid provides a better load distribution onto the foundation.

#### 4. TOP LAYER

Add the substrate to the ECCOdal grass grids up to 1 cm (max 0.5 cm) from the edge of the grid (that way, the growing area of the grass is protected in the valley). Add the grass to the grass grids (preferably grass with long roots, e.g. Festuca arundinacea). You can use a self-compacting substrate, that way you no longer need to brush out anything as the substrate will compact naturally.

Every project is unique. These instructions are merely advisory.

### SPECIFICATIONS

- COMPOSITION - 100% recycled materials (PE-PP)
- LENGTH (excl. connections) - 78,5 cm
- WIDTH (excl. connections) - 58,5 cm
- HEIGHT - 4 cm
- COLOUR - green with grey nuances







# DRAINBASE

ECCO PRODUCTS

## Modular drainage tile system

Applicable with artificial grass in gardens on, rooftop terraces and playgrounds

### INFO

- + Optimal load distribution thanks to large contact surface
- + Manufactured from HDPE material - high flexibility, even in cold temperatures
- + Water buffering capacity of 30 litres/m<sup>2</sup>
- + 9 flexible zones to maintain contact with the surface
- + Anti-slip system to ensure that the artificial turf stays in place
- + Unique connection system allows the plates to shrink and expand within their own dimensions

### APPLICATIONS

- + Artificial grass in the garden and landscaping
- + Highly suitable for roof terraces
- + Playgrounds

## ACCESSORIES

### FIXATION CAPS



The artificial grass can be fixed at any position with the provided mounting caps and accompanying screws.

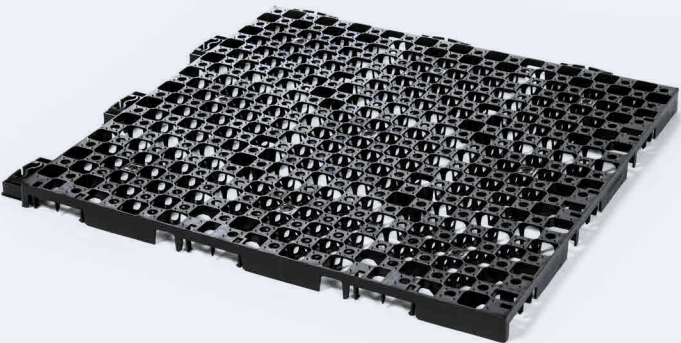
### DRAINBASE BORDERS



ECCO Drainbase Borders are specifically designed to provide the finishing touch to your project. The border system prevents the grass edges from curling up and stops vermin from accessing the grid as the sides are neatly closed off.

## SPECIFICATIONS

- COMPOSITION - 100% recycled HDPE (high-density polyethylene) and 100% recyclable
- TILE DIMENSIONS 60 X 60 cm = 0,36 m<sup>2</sup>/tile
- GRID HEIGHT - 30 mm
- TILE WEIGHT - 917 gram // 2,55 kg per m<sup>2</sup>
- WATERBUFFERING CAPACITY 30 liter/m<sup>2</sup>
- COLOUR - black







# 1CONNECT

ECCO PRODUCTS

## COLOURS



NEUTRAL



STONE GREY



BASALT

## Ready-to-use weed-resistant jointing sand for light traffic

Vacuum-packed



### INFO

- + Prevents weed growth in (paving) joints
- + Water-, air- and gas-permeable
- + Apply in dry weather
- + Applicable to both new and existing paving
- + Durable and maintenance-friendly
- + UV- and frost-resistant, road salt resistant
- + Eco-friendly
- + User-friendly!



Joints from 3 mm wide and 3 cm deep



Water-, air- and gas-permeable



100% frost-resistant



Sustainable and eco-friendly

### INSTRUCTIONS

#### STEP 1: Preparation

All joints should be sprayed out at least 3 cm deep, then filled with 1connect.

#### STEP 2: Application

Open the vacuum bag and spread 1connect over the wet sprayed area.

#### STEP 3: Sweeping

Sweep the sand into the joints with light pressure using a hard broom or squeegee. Be sure to keep the paving wet while sweeping.


#### STEP 4: Easy to sweep


After 10 to 30 minutes, sweep diagonally with a soft broom until the pavement is clean.

(\*) We recommend testing out the joint filler on a small area in advance.




### SPECIFICATIONS

 COMPOSITION : Ready-to-use polymeric sand

 JOINT WIDTH: min. 3 mm  
JOINT DEPTH: min. 3 cm

DRYING TIME: 24 h - 72 h  
at a temperature of 20 degrees

PACKAGING: vacuum packed

 MIN. OUTSIDE TEMPERATURE AT INSTALLATION:  
> 5°C and < 30°C

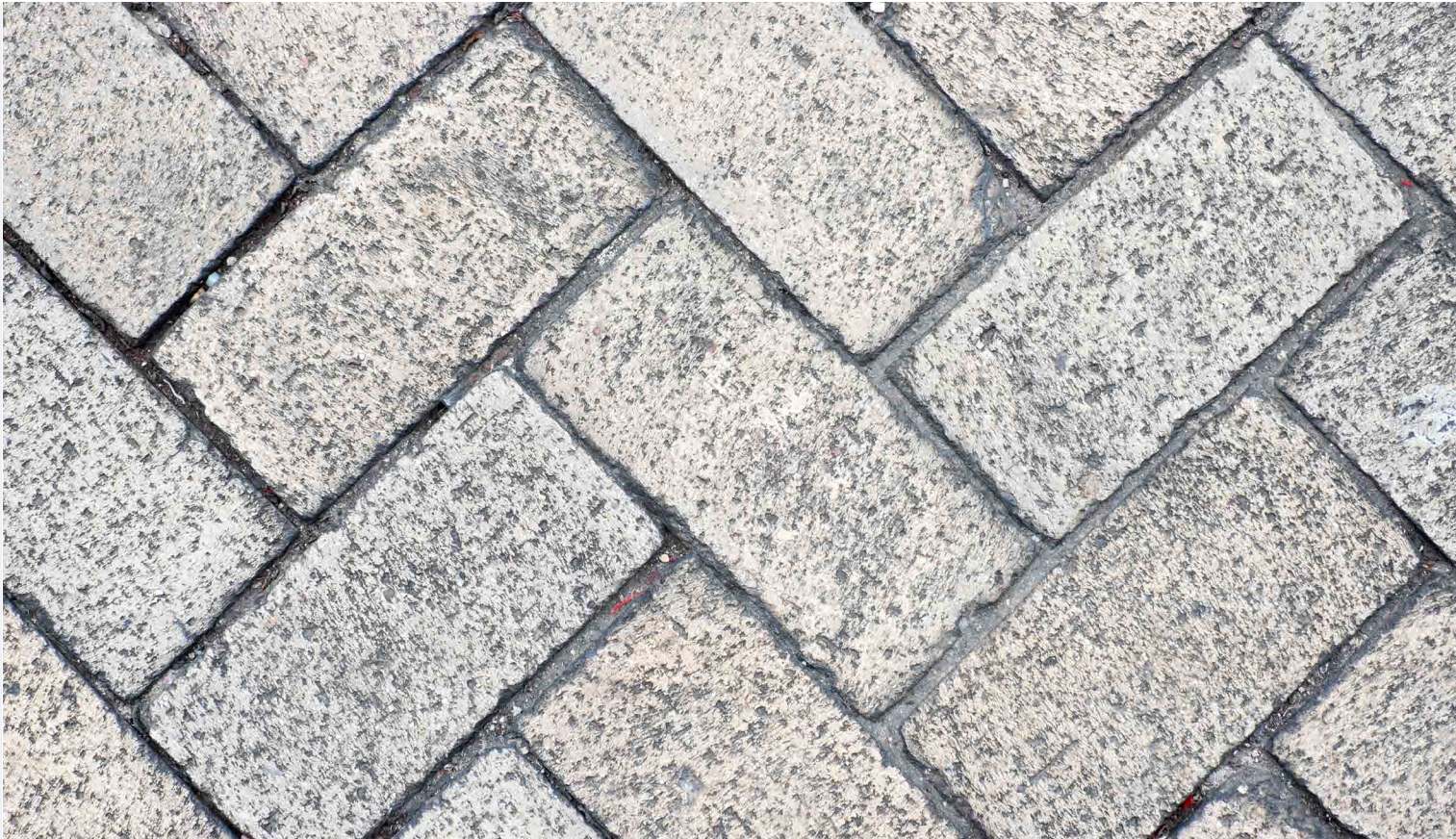
### APPLICATIONS

Suitable for paving with **light traffic loads**:

- + Traffic-free shopping streets
- + Walkways and bike paths
- + Garden paths
- + Terraces
- + Private parking places







# 2CONNECT

ECCO PRODUCTS

## Weed-free joint filler for HEAVY traffic

Epoxy based



### COLOURS



NEUTRAL



STONE GREY



BASALT

### INFO

- + Prevents weed growth in (paving) joints
- + Water-, air- and gas-permeable
- + Application possible in wet and dry weather
- + Applicable to both new and existing paving
- + Durable and maintenance-friendly
- + UV- and frost-resistant, road salt resistant
- + Eco-friendly
- + User-friendly!



Joints from 5 mm wide and 3 cm deep



Water-, air- and gas-permeable



100% frost-resistant



Sustainable and eco-friendly

### INSTRUCTIONS

#### STEP 1: Preparation

Clean the paving and joints so that all weeds and dirt are removed.

#### STEP 2: Mixing

Mix components A and B with the quartz sand for 2 to 3 minutes. Then add up to a maximum of 3 litres of water to the mixture and mix again for 3 minutes.

#### STEP 3: Application

Pour the ECCO 2Connect joint filler onto the paving that has been moistened beforehand. Sweep the joint filling into the joints with a hard broom or rubber squeegee.(\*)

#### STEP 4: Sweeping

After 10 to 30 minutes, sweep diagonally with a soft broom until the pavement is clean. applying the product, there may be a slight temporary sheen, which disappears completely over time.

(\*) We recommend testing out the joint filler on a small area in advance.



### SPECIFICATIONS

- COMPRESSIVE STRENGTH: 21 N/mm<sup>2</sup>
- TENSILE STRENGTH: 6,1 N/mm<sup>2</sup>
- JOINT WIDTH/DEPTH: min. 5 mm, min. 3 cm
- DRYING TIME: 24h - 48 h at a temperature of 20 degrees
- MIN. OUTSIDE TEMPERATURE AT INSTALLATION: > 5°C and < 30°C

### APPLICATIONS

Suitable for paving with **heavy traffic loads**:

- + Roundabouts
- + Cobblestone roads
- + Roads with wide joints



Less suitable for ceramic tiles, bluestone and porous materials.





# ECCOSEDUM

ECCO PRODUCTS

## Ready-made green roof trays

ECCOsedum trays can be placed on flat roofs and pitched roofs

### INFO

- + Easy to handle: installation of the green roof is very simple and can be done by 1 person.
- + Low weight per m<sup>2</sup>: +/- 80 kg/m<sup>2</sup> depending on whether it is saturated or not.
- + The system can therefore be applied to almost any existing roof.
- + Installation can take place all year round. Unlike a direct installation where you have to avoid the winter and summer periods.
- + Easily removable if needed, e.g. for water infiltration or roof works.
- + Consistent substrate thickness. As opposed to a solid green roof where the thickness can vary between 1 and 8 cm, causing weed growth
- + Smoothed out pressure points on the side of the tray allowing better pressure distribution, in contrast to other ready-made systems that do not have this feature.



### INSTALLATION

#### 1. VEGETATION LAYER

The ECCOsedum system contains at least 7 kinds of sedum and is fully rooted (avoiding weed growth).

#### 2. SUBSTRATE LAYER

The substrate layer provides nutrients and water for the vegetation, but also provides oxygen and root anchoring.


#### 3. WATER RETENTION LAYER


Water retention helps plants survive dry periods. The bottom half of the tray ensures that rainwater is retained.


#### 4. DRAINAGE LAYER

The drainage layer allows excess rainwater to run off the roof membrane.

### SPECIFICATIONS

-  FULLY PRE-CULTIVATED  
READY-MADE GREEN ROOF TRAYS  
  
COMPOSITION TRAYS: 100% recycled polypropylene (PP)  
  
UV-LIGHT: The trays are provided with a UV stabiliser

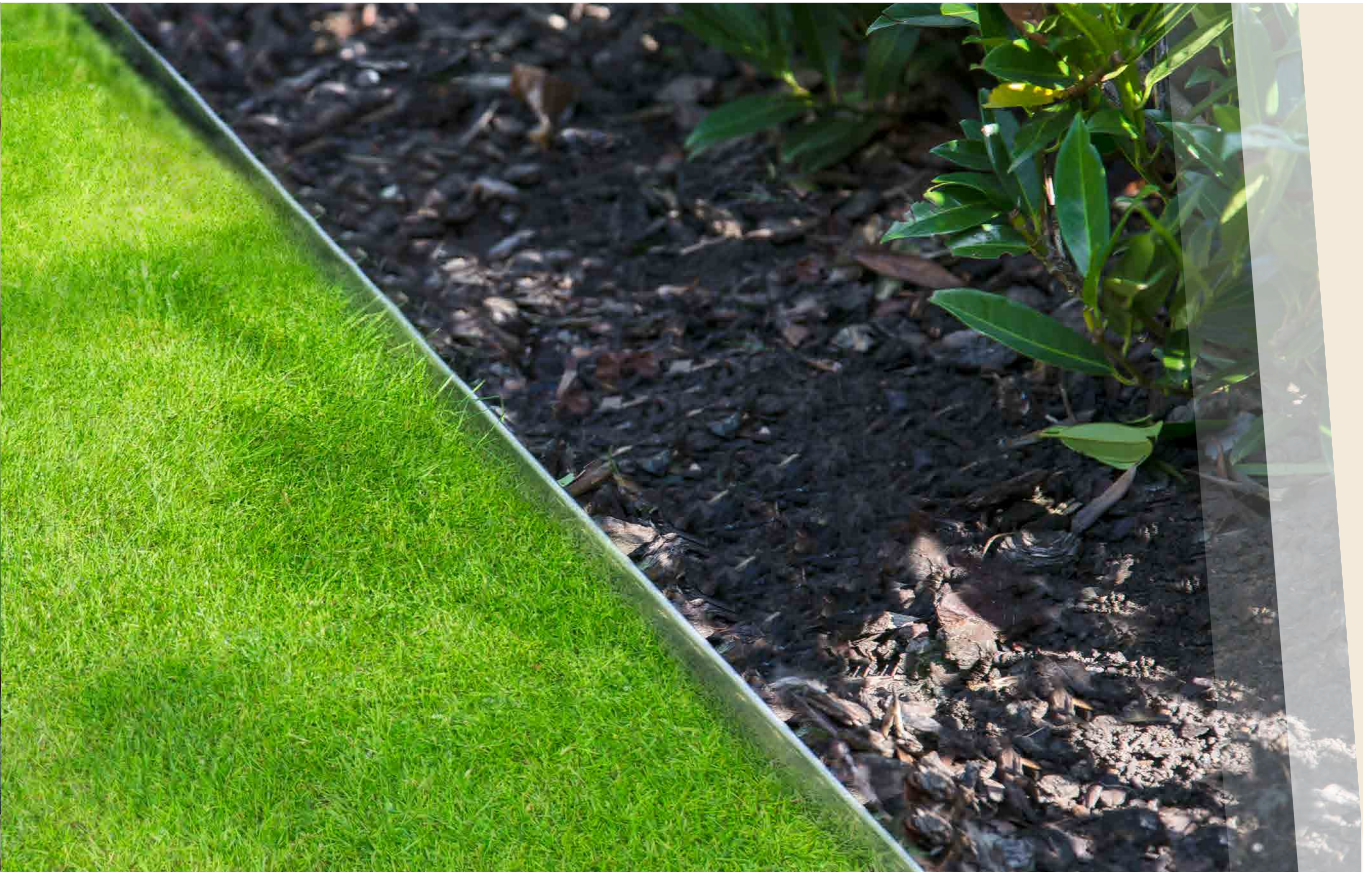
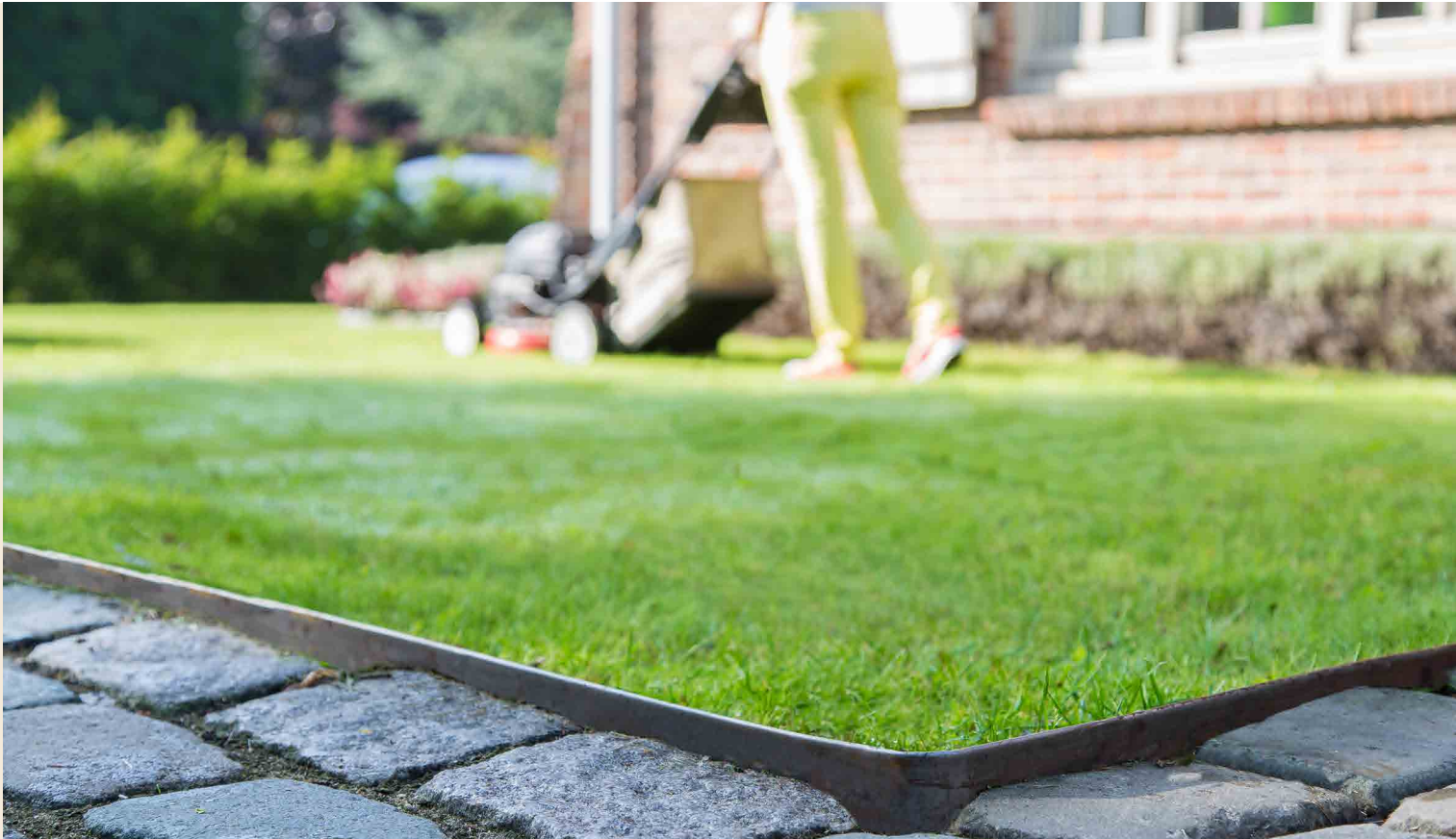
-  WEIGHT per tray: +/- 16 kg/tray  
per m<sup>2</sup>: +/- 80 kg/m<sup>2</sup>

-  DIMENSIONS (l x w x h)  
45 cm x 49,5 cm x 8,5 cm (4,4 trays/m<sup>2</sup>)



BEE-FRIENDLY





Quick and easy to install borders

In high-quality galva or corten steel for all your garden projects

INFO

- + Easyfix LI (linear) can be used in straight lines as well as in slightly sloping shapes and right angles
- + The Easyfix CS (custom shape) is extremely pliable and adaptable to all possible shapes
- + Quick and easy to install using a hammer
- + Random anchoring according to your design
- + Curved top edge for optimal safety in use without sharp edges
- + Long anchoring pins provide improved stability
- + Limited visibility of fixing material after installation

INSTALLATION

EASYFIX BORDER



For straight lines (LI) as well as curved shapes (CS)

EASYFIX POCKET



The movable pockets can be placed randomly

EASYFIX ANCHOR



Solid anchoring through long anchoring pins

SPECIFICATIONS

- ↑↓ TYPES
  - Easyfix LI (linear) / Easyfix CS (custom shape)
  - Easyfix LI is also available in black on demand
  - Package content: 6 borders + 18 anchors (3 anchors per border)
- ⊠ DIMENSIONS
  - Length: 240 cm
  - Width: 0,8 mm (galva) and 1 mm (corten)
  - Height: 10 cm or 15 cm
  - Height anchor: 34 cm
  - Dimensions pocket: 12 x 9,6 cm (100) and 12 x 14,6 cm (150)
- ⚙ APPLICATIONS
  - Suitable for all areas not driven on, such as paved surfaces, patios, flower beds, lawns, vegetable gardens, ...





# METALFLEX

ECCO PRODUCTS

## Metalflex is a border in galvanised steel

Available in L-shape in 4 heights

### INFO

- + Easy to use
- + Quick and easy to install
- + Flexible: suitable for straight and curved lines
- + Available in 4 heights: 4,5 cm, 6 cm, 8 cm or 10 cm
- + Rounded top edge for optimal safety
- + Made from durable materials
- + Great in combination with ECCOgravel



### INSTALLATION

- + Determine the trace
- + Bend in the right shape if needed
- + Fix the border in the ground with the anchor nail at approximately every 80 cm

### RECOMMENDATIONS

- + For heavier loads (e.g. side of driveway), concrete is recommended.
- + Metalflex H45 and H60 are particularly suitable in combination with ECCOgravel. The height of the borders perfectly matches the height of the grids + the finishing layer. This way, the edge of the border is barely visible.

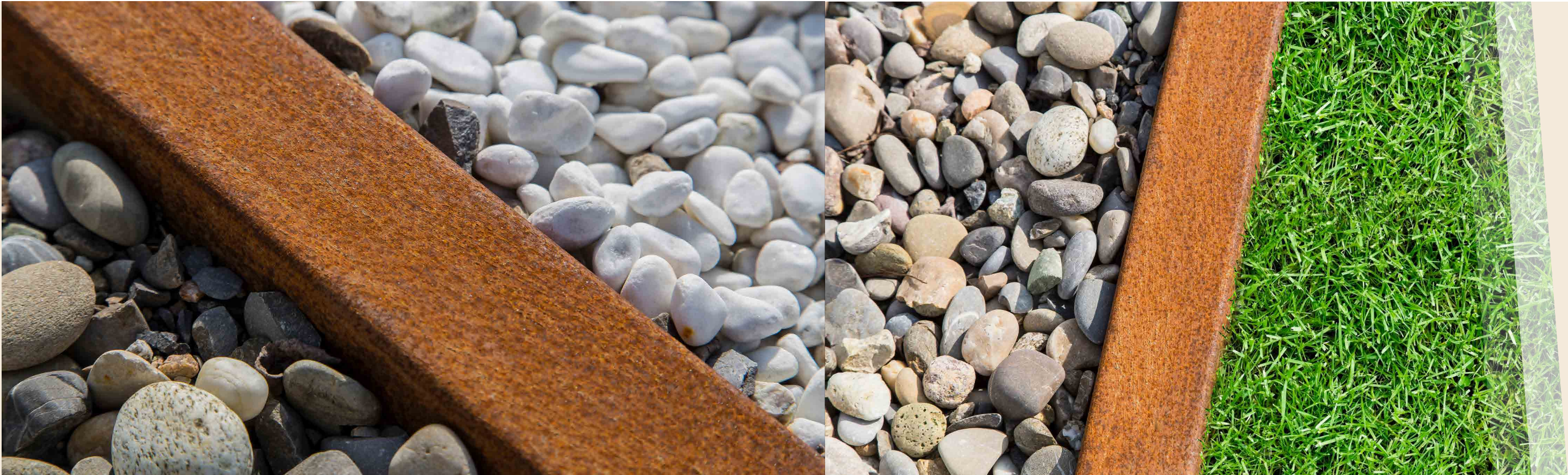
### SPECIFICATIONS

- ✂ DIMENSIONS
- Metalflex H45: 240 cm x 0,10 cm x 4,5 cm
- Metalflex H60: 240 cm x 0,10 cm x 6 cm
- Metalflex H80: 240 cm x 0,10 cm x 8 cm
- Metalflex H100: 240 cm x 0,10 cm x 10 cm

- ⚙ MATERIAL: galvanised

- ⚙ APPLICATIONS:
- Borders for all soft and paved surfaces:
- + Asphalt
  - + Gravel surfaces
  - + Clinker bricks
  - + Bricks
  - + Tiles
  - + ...





# BETOTOP

ECCO PRODUCTS

## High quality profiles

in corten steel for an elegant finish to concrete curbs

### INFO

- + Suitable for new projects and updating existing curbs
- + Long lifespan
- + Low maintenance
- + Easy installation
- + Various combination possibilities
- + Elegant finish
- + Concrete curb is protected
- + Levels out any height differences between the concrete curbs
- + Self-locking
- + High quality product made from corten steel

Length	Width	Height	Thick- ness	Shape
BETOTOP 50 CORTEN				
200 cm	5 cm	6 cm	0,1 cm	U-shape
BETOTOP 60 CORTEN				
200 cm	6 cm	5,5 cm	0,1 cm	U-shape
BETOTOP SPECIAL				
200 cm	6 cm	20 cm	0,1 cm	U-shape

BETOTOP Special is a variant that fits perfectly on concrete curbs of 6 cm top width and a visible side of 20 cm.



### SPECIFICATIONS

- AVAILABLE IN:
- Corten steel
- DIMENSIONS
- U-profile 50
  - U-profile 60
  - U-profiel 60x200
- APPLICATIONS
- Suitable for all areas not driven on:
- + Garden path
  - + Pond edge
  - + Terraces
  - + Flower beds and lawns
- As well as suitable for areas used for driving:
- + Driveways
  - + Parking spaces
  - + Access roads





Flexible and easy-to-install border

Available in 5 colours and 3 heights

INFO

- + Durable and (weather)resistant
- + Easy to install without specialist tools
- + Reinforced ground anchoring thanks to anchoring pins with a unique fold
- + The Dual Lock Mechanism® ensures a secure and strong connection between the borders
- + Resistant to ride-on mowers and lawn mowers
- + Can be used in both straight lines and curved shapes or corners

INSTALLATION

- + Double attachment ensures a safe and secure connection between two borders, making installation quick and easy. A pair of pincers suffices to connect two borders.
- + The overall length is 1075 mm, which results in a connected length of 1000 mm.
- + The anchoring pins contain a unique fold in the middle, reinforcing the ground anchor and making it suitable for use in heavier soil.



SPECIFICATIONS

- FINISH
  - + Anthracite (RAL 7016)
  - + Black (RAL 9005)
  - + Corten
  - + Galva
  - + Brown (RAL 8028)
- MATERIAL: flexible steel
- DIMENSIONS
  - Length: 1075 mm
  - Height: 65 mm, 100 mm or 150 mm
  - Package content: 5 borders
- APPLICATIONS
  - + Lawn and border edge
  - + Paths and terrace
  - + Flower bed or vegetable garden





# CORE DATUM EDGE

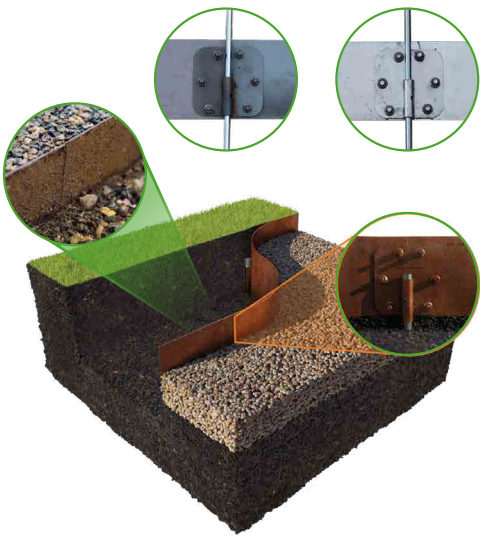
powered by **ECCO** PRODUCTS

## The solution for heavy-duty edging

Built for the trade, by the trade

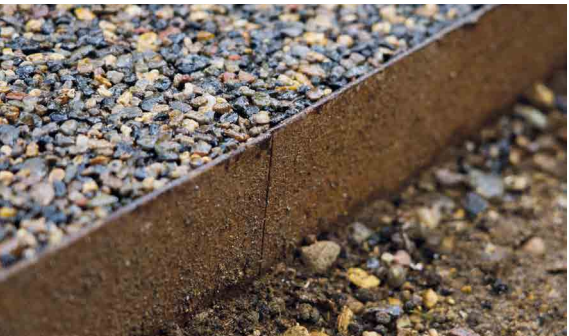
### INFO

- + Designed for commercial landscaping projects
- + Ideal for tough ground conditions and demanding environments
- + Suitable for corners as well as straight and curved shapes
- + Secure fastening thanks to long anchoring pins
- + Aesthetic: no visible fixtures
- + DatumLock™ locking system allows for precise micro-adjustments of the edging height
- + Easy to cut on-site
- + No preformed spikes, offering versatile usage
- + Partially recycled / 100% recyclable



### INSTALLATION

- + The Core Datum Edge is equipped with the DatumLock™ locking system, allowing the edging height to be adjusted as desired, with no visible fastenings.
- + The long anchoring pins ensure a secure fixation in the ground.
- + Two edging sections can be securely connected together using the included joining plates and bolts.



### SPECIFICATIONS

- FINISH
  - + Corten steel
  - + Galvanised steel
  - + Mild steel
- DIMENSIONS
  - 2200 x 3 x 150 mm (L x W x H)
  - Weight: 10 kg
  - Package content: 2 borders + 2 joining plates
  - 4 anchorings per border
  - Life span: > 25 years
- APPLICATIONS
  - + Lawn
  - + Paving
  - + Driveway
  - + Commercial landscaping projects
  - + ...





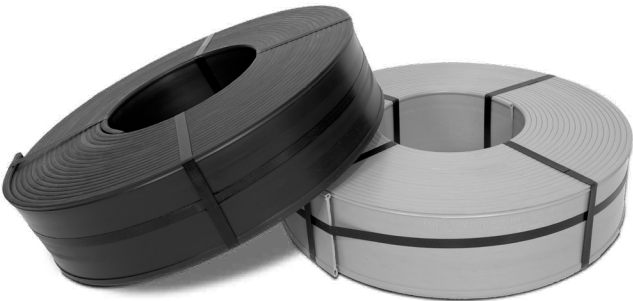
**ECCOBORDER FLEX SOFT**  
ECCO PRODUCTS

**Durable and budget-friendly borders**

**Made from recycled PVC**

**INFO**

- + Easy to install border on roll
- + Available in 2 colours
- + Manufactured from recycled PVC and 100% recyclable
- + Optimal handling thanks to tongue and groove function
- + To be fitted with rounded or flat finishing edge on top
- + Excellent price-quality ratio
- + Economical alternative to wooden or metal edgings



**INSTALLATION**

- + Fastening by means of Multi Profile anchoring



**SPECIFICATIONS**

- ✚ MATERIAL: recycled PVC
- ⬆⬆⬆ COLOUR\*: black or grey  
(\* Colour and composition may vary due to the use of recycled material)
- ✂ HEIGHT: 14 cm  
LENGTH ROLL: 25 m  
WIDTH: 4,5 mm, top and bottom edge 8 mm
- ⚙ APPLICATIONS  
Suitable for a wide range of applications:
  - + Turf edging
  - + Edging of gravel paths
  - + Flower bed, vegetable garden, ...
  - + Pond edging





Durable and budget-friendly borders

Made from recycled PVC

INFO

- + Easy to install 2m40 straight border
- + Ideal for sleek and straight edging and creating 90° angles
- + Available in 2 colours
- + Manufactured from recycled PVC and 100% recyclable
- + To be fitted with rounded or flat finishing edge on top
- + Excellent price-quality ratio
- + Fastening by means of Multi Profile anchoring
- + Economical alternative to wooden or metal edgings



INSTALLATION

- + Fastening by means of Multi Profile anchoring



SPECIFICATIONS

- ✚ MATERIAL: recycled PVC
- ⚖ COLOUR\*: black or grey  
(\* Colour and composition may vary due to the use of recycled material)
- ✂ HEIGHT: 14 cm  
LENGTH PANEL: 2m40  
WIDTH: 4,5 mm, top and bottom edge 8 mm
- ⚙ APPLICATIONS  
Suitable for a wide range of applications:
  - + Turf edging
  - + Edging of gravel paths
  - + Flower bed, vegetable garden, ...
  - + Pond edging





# MULTI PROFILE

ECCO PRODUCTS

## Solid anchoring

Suitable for borders in all types of materials

### INFO

- + Optimal anchoring and stability through alternating soil displacement
- + The cavities in the profiles provide a significant counterforce
- + Alternating profile structure results in better vertical guidance
- + Made from a recycled plastic mix that combines high impact strength and rigidity
- + No danger of milling out due to patented wall structure
- + The screw passes through 4 screw surfaces
- + Universal anchoring suitable for all types of borders

## INSTALLATION

- + To be secured with self-drilling countersunk screws, length 45 mm (not included)
- + Always screw in on the flat side in the upper 18 cm



## SPECIFICATIONS

MATERIAL: Recycled plastic mix

COLOUR: black

Available in 2 HEIGHTS: 38 cm and 58 cm

SCREW SURFACE: 18 cm

APPLICATIONS

Can be combined with any type of border





# TREE BORDER

ECCO PRODUCTS

## Tree border/circle in corten steel

Gives your tree the accent it deserves

### INFO

- + Aesthetically pleasing
- + Easier and more economical maintenance
- + Avoids chemical weeding around the trunk
- + Available in 3 sizes
- + Simple, 'invisible' connection of 2 halves with accompanying installation material

### INSTALLATION

- + The tree circles consist of 2 halves that can easily be put together using a plate and supplied bolts.
- + When the two halves are connected, push or hammer the tree circle into the ground.
- + Next, you can fill the area around the trunk with gravel, bark or any material of your choice.



### SPECIFICATIONS

-  MATERIAL  
Corten steel
-  AVAILABLE IN 3 SIZES  
50 CORTEN: Ø 500 mm, edge width 100 mm  
75 CORTEN: Ø 750 mm, edge width 150 mm  
100 CORTEN: Ø 1000 mm, edge width 200 mm
-  APPLICATIONS  
FOR PLACEMENT AND INSTALLATION IN BOTH
  - + semi-paved areas
  - + (city) gardens
  - + parks
  - + gravel area
  - + paved areas
  - + ...





# TREE GUARD

ECCO PRODUCTS

## The reliable tree protection

For the protection of trees from damage

### INFO

- + Perforations allow the tree to get enough air, light and sun
- + No risk of fungal decay, as the tree can “breathe”
- + Corrosion- and weather-resistant
- + The non-perforated area of 10 to 15 cm at the bottom provides protection against mice and mowing damage
- + Effective protection against damage caused by biting, scraping or scratching animals

## INSTALLATION

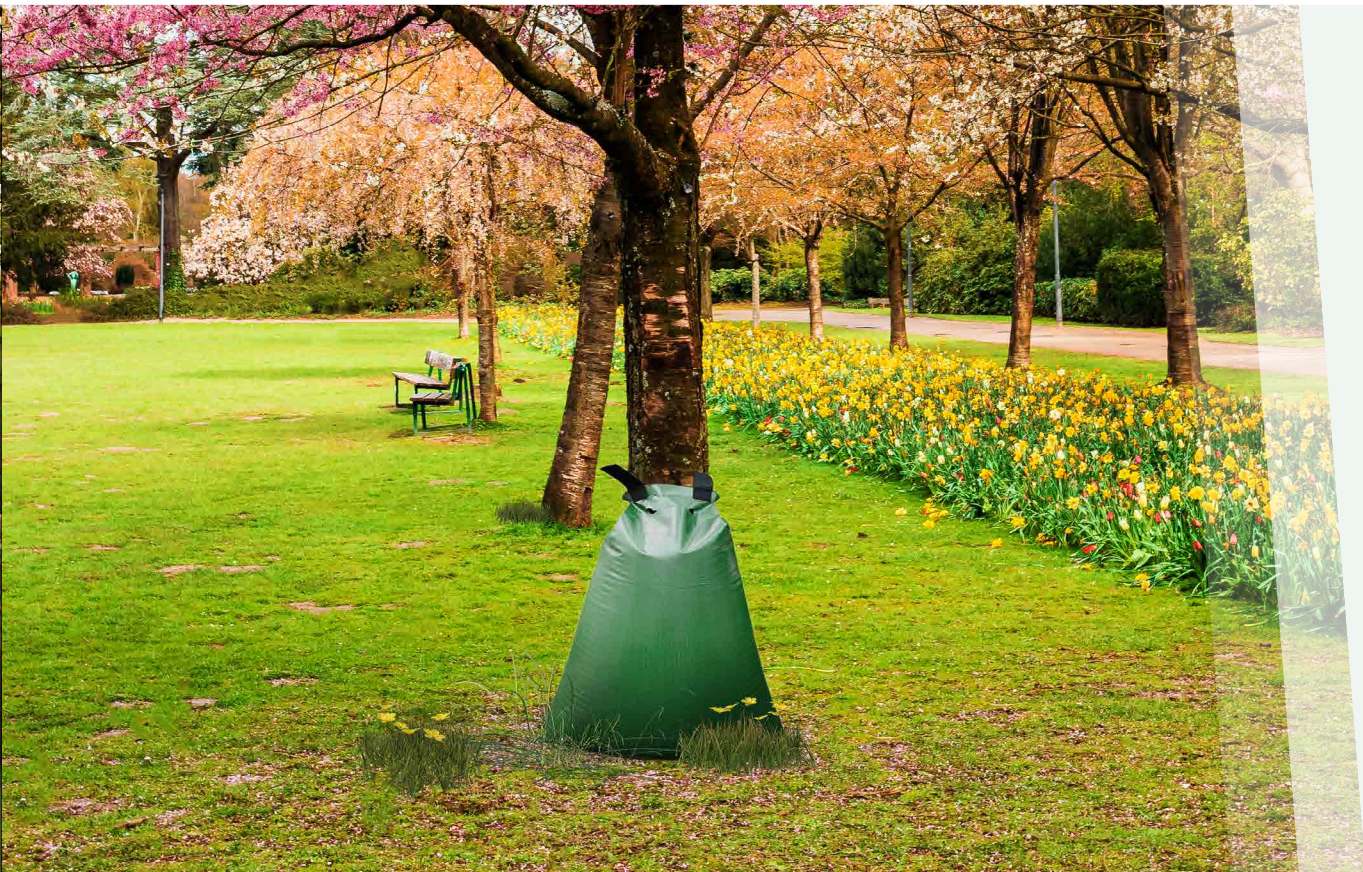
- + Easy and quick installation due to full-length cut-out
- + Self-closing due to its own elasticity



## SPECIFICATIONS

- ✂ MATERIAL: PVC (Polyvinylchloride)
- ✂ HEIGHTS: 80, 100, 120 AND 150 CM  
COLOUR : GREEN  
DIAMETER : 85 MM
- ⚙ APPLICATIONS  
For the protection of
  - + Deciduous trees
  - + Fruit trees
  - + Conifers
  - + ...





# ECC-O-BAG

ECCO PRODUCTS

## Reusable tree water bag

### Drip irrigation for trees

#### INFO

- + Drip-by-drip and consistent irrigation allows trees to absorb water better, without risk of the soil getting too wet
- + The tree remains better protected during periods of extreme drought
- + Easy to install thanks to zip system
- + Wide field of application: depending on the tree trunk diameter, 1 or several water bags can be zipped together per tree
- + Strong material: tear-proof and UV- and weather-resistant
- + Runtime: 7 - 10 hours



## INSTALLATION

### STEP 1: Preparation

Place the ECC-O-bag around the tree trunk (up to 30 cm in circumference). If the trunk circumference is larger, you can zip several bags together.

### STEP 2: Zip up

Next, carefully close the zip(s).

### STEP 3: Fill in

First fill the ECC-O-bag with 10 litres of water (1/6) and then briefly lift the bag by the black loops. This is important to prevent the water from flowing out of the bag. Then fill the bag completely. Only use clean water. Dirt particles may clog the water holes in the tree bag.



## SPECIFICATIONS

✂ MATERIAL: REACH-certified PVC material

✂ 2 TYPES: light (460 g) and heavy (650 g)

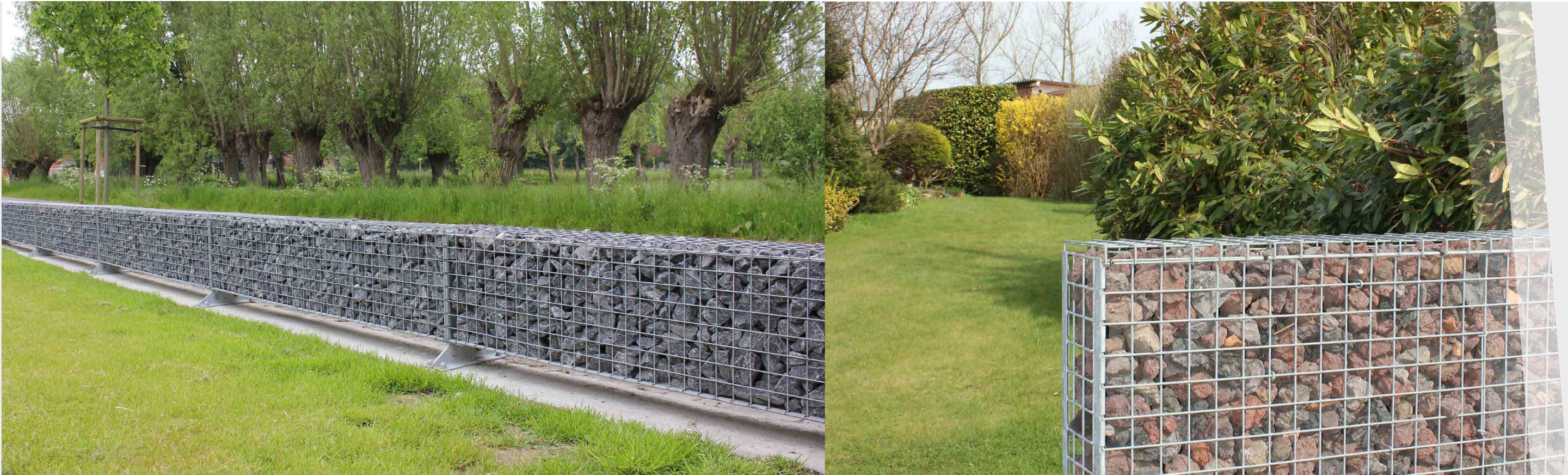
⬆⬆ COLOUR: green

Capacity: 75 L

⚙ APPLICATIONS

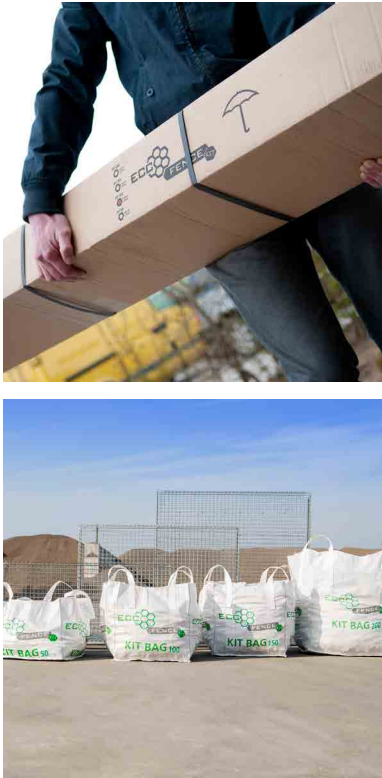
- + To be used after planting or transplanting trees
- + Suitable for administering liquid tree fertiliser





# ECOFENCE KIT

ECCO PRODUCTS



## A professional construction kit

To achieve a natural-looking enclosure.

### INFO

- + Professional “all-in-one” kit
- + Corresponding kit bags available
- + Easy assembly thanks to enclosed layout plan + installation video
- + Easy to customise yourself
- + Little loss of space due to narrow width
- + Floating installation possible
- + Subtle transition between the baskets
- + Available in 4 heights
- + All bolts and nuts are included
- + Extra reinforcements for optimal safety

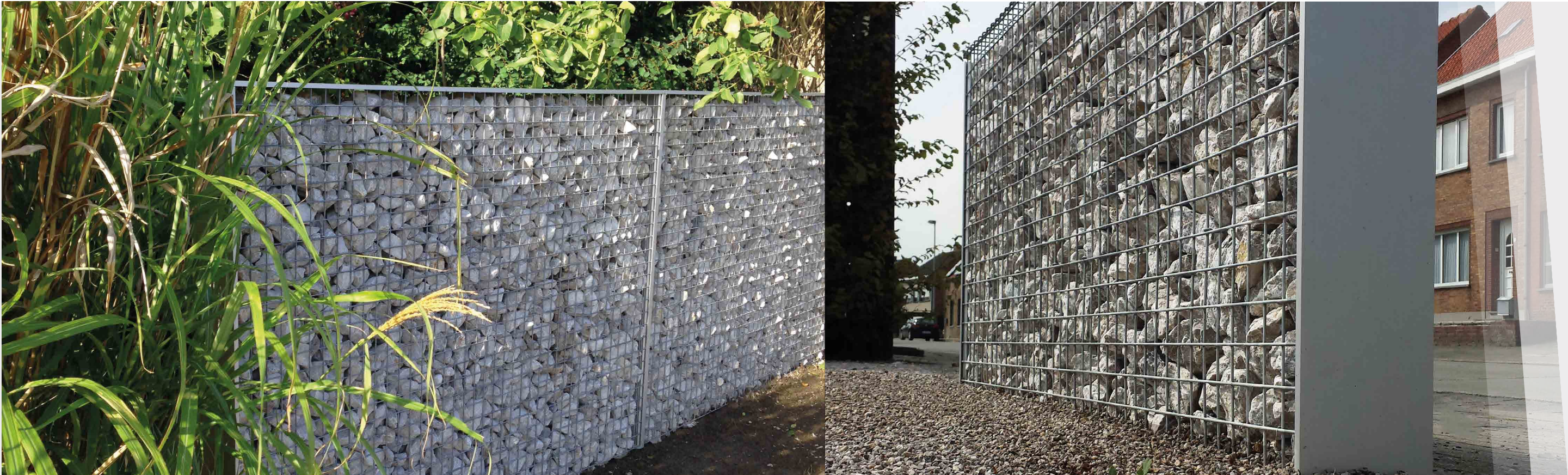
### ACCESSORIES

- + Finishing net**  
A side net that causes the stones to be visible on the side.
- + Foot 90°**  
This foot can be used to place the baskets at an angle
- + Raised feet**  
Specifically designed to level out height differences of up to 5% if the baskets are placed on a sloping surface.
- + Filling**  
Corresponding Kit Bags available. The ideal calibre to fill an ECOFence KIT is between 40 mm and 100 mm, depending on the shape of the stones. The required filling expressed in m³ is :  
  
ECCOFence KIT 50: 0,17 m³  
ECCOFence KIT 100: 0,38 m³  
ECCOFence KIT 150: 0,59 m³  
ECCOFence KIT 200: 0,80 m³

### SPECIFICATIONS

- ✂ DIMENSIONS**  
  
201 x 20 cm (L x W)  
  
Height: 50 cm, 100 cm, 150 cm or 200 cm  
  
Length is adjustable by 5 cm  
  
Mesh: 50 x 50 mm
- ⚙ APPLICATIONS**
  - + Fencing
  - + Terraces
  - + Retaining walls
  - + Advertising
  - + Separation wall





# ECOFENCE ALUBOX

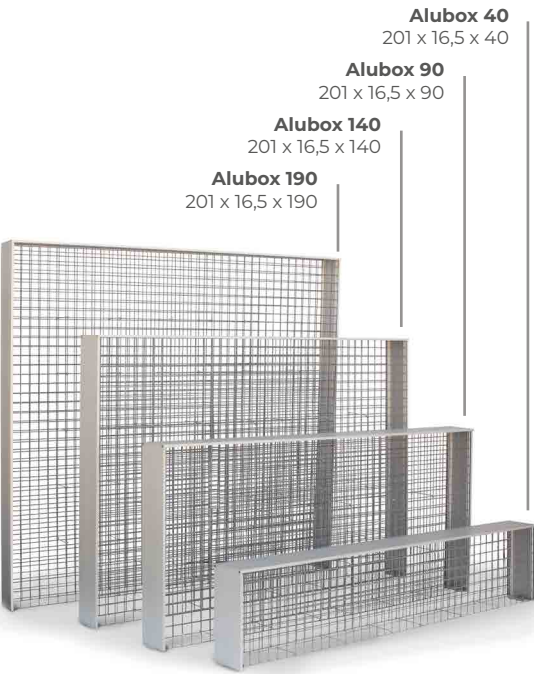
ECCO PRODUCTS

## A trendy gabion

Made from aluminium

### INFO

- + Professional construction kit
- + Can be assembled and filled on site
- + Simple assembly
- + Easy to customise
- + Little loss of space due to narrow width
- + Design look thanks to aluminium
- + Choice between various finishes
- + Multiple applications: benches, partitions,...



### ACCESSORIES

- + Choice between aluminium upper profile or upper net
- + Installation with expansion bolts : 4 M12 expansion bolts per gabion. The expansion bolts must be sufficiently anchored in concrete (min. 350 kg cement/m<sup>3</sup>).
- + Installation with ground anchor : 1 ground anchor for each gabion + 1 extra ground anchor for the first gabion.
- + The ideal calibre for filling the ECOFence ALUBOX is between 40 mm and 90 mm, depending on the shape of the stones. The required filling expressed in m<sup>3</sup> is :

ECOFence Alubox 40: 0,14 m<sup>3</sup>  
ECOFence Alubox 90: 0,31 m<sup>3</sup>  
ECOFence Alubox 140: 0,49 m<sup>3</sup>  
ECOFence Alubox 190: 0,66 m<sup>3</sup>



### SPECIFICATIONS

- ✂ DIMENSIONS
- 201 x 16,5 cm (L x W)
- Height: 40 cm, 90 cm, 140 cm or 190 cm
- Mesh: 50 x 50 mm

- ⚙ APPLICATIONS
- + Fencing
  - + Terraces
  - + Publicity
  - + Advertising
  - + Garden bench/garden table (thanks to aluminium upper profile)



Grid of dots for notes on page 50.

Grid of dots for notes on page 51.



Grid of dots for notes on page 52.

Grid of dots for notes on page 53.

ECCO PRODUCTS opts for sustainable printing on recycled paper.





COMPANY AND  
CONTACT INFORMATION

**ECCO** PRODUCTS

Poelstraat 167 - 9820 Merelbeke  
Belgium

+32 9 247 00 25  
[info@eccoproducts.eu](mailto:info@eccoproducts.eu)

