



ECCO  **PRODUCTS**

INNOVATIVE OUTDOOR SOLUTIONS



WWW.ECCOPRODUCTS.EU

The background of the image is a light gray, textured wall. In the upper left corner, there are several thin, dark branches with long, narrow, green leaves, possibly bamboo, extending across the frame. The leaves are in sharp focus, while the background wall is slightly blurred. The bottom of the image shows a layer of small, light-colored gravel or pebbles.

ECCO **PRODUCTS**



YOUR PROJECT. OUR PRODUCTS.

ECCO PRODUCTS is a **trendsetter** and **manufacturer** of water permeable **solutions for outdoor spaces**. Together with our partners we **strive towards a greener future**.

We have a clear mission: we want to make an area of **20 million m² water-permeable** by 2025. Moreover, we will double this amount every five years.

Choosing ECCO, is choosing a company that **invests** in three things:

- + **In the development of ecological products** that provide a solution to today's water issues.
- + **In people**. Our employees are the foundation of everything we do. That is why we, as a company, invest in their personal growth, that will enrich them professionally as well as personally.
- + Honesty and integrity 'is' key to these **relationships**.

These are not just empty words. We can prove that this has resulted in a success story, because ECCO

- + **grows faster** than its competitors ...
- + and has a **reliable customer network**. Our customers describe us as an established and highly regarded company with a wide range of products. They regard us as a company that they can count on.

This commercial network is supported by powerful and innovative marketing tools

Together we can really infiltrate the planet.



PERMEABLE SURFACE



Protection and enrichment of biodiversity



Efficient sound insulation



Optimised efficiency of solar panels



Positive effect on work satisfaction & productivity



Longer lifespan than ordinary roofing



Positive effect on mood & physical health



Optimisation of thermal isolation



Financial benefit

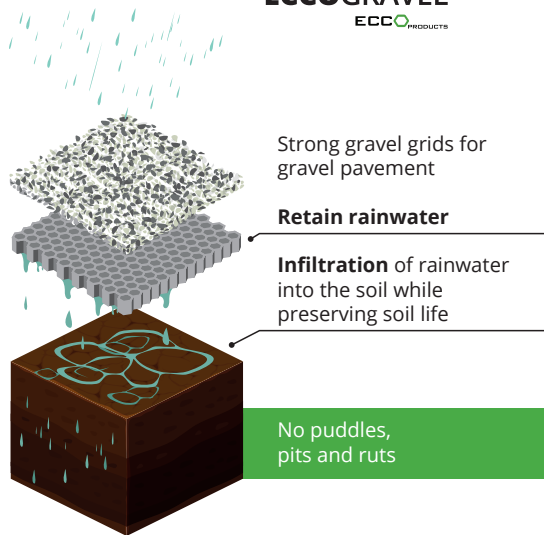
With these solutions for
water control from

ECCO  **PRODUCTS**

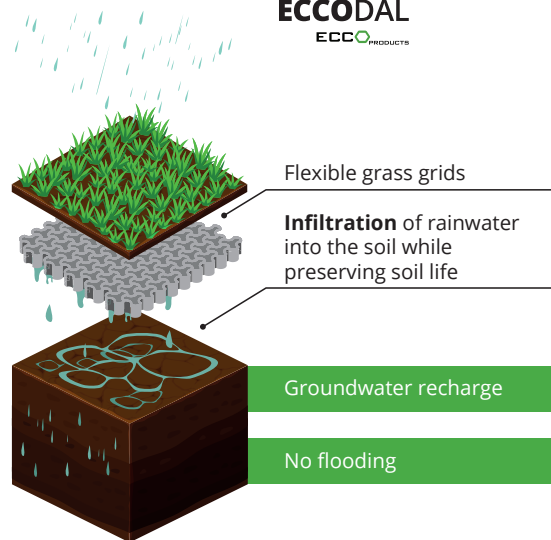


PERMEABLE SURFACE

ECCOGRAVEL ECCO PRODUCTS

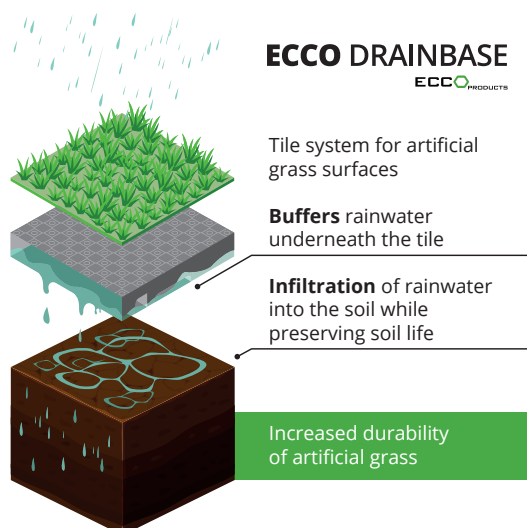


ECCODAL ECCO PRODUCTS

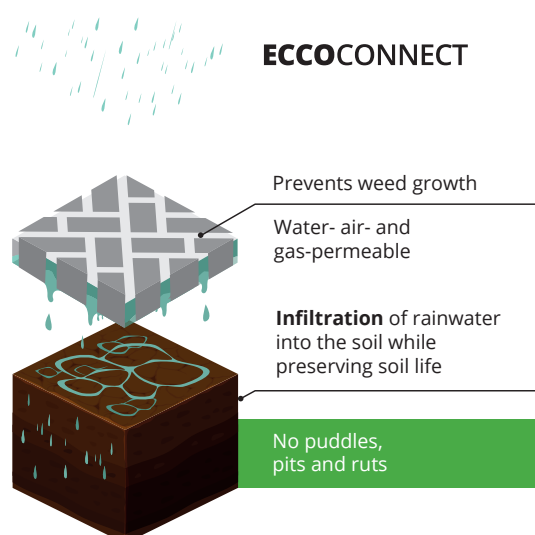


THESE SYSTEMS ARE MAXIMALLY RECYCLED AND 100% RECYCLABLE

ECCO DRAINBASE ECCO PRODUCTS



ECCOCONNECT





ECCO GRAVEL

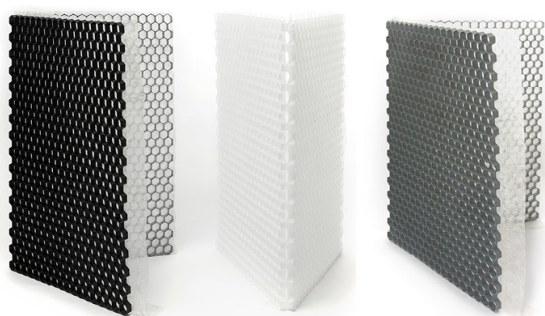
ECCO PRODUCTS

Strong, frost-resistant gravel grids in HDPE

for a perfectly permeable pavement in accordance with the highest quality standards

INFO

- + Frost-resistant gravel grid in HDPE with high compressive strength and impact value.
- + Increased resistance against torsional loads thanks to plastic reinforcements between the cells
- + Attached weed membrane made from polyester, open structure promotes drainage whilst remaining strong and will not deteriorate over time.
- + Very user-friendly: easy and quick to transport thanks to foldable format
- + Eliminates accessibility issues associated with gravel surfaces
- + Creates a smooth surface which is perfectly walkable and rideable





INSTALLATION

1. FOUNDATION

Limestone rubble, porphyry rubble, or crushed concrete rubble (chip size: 0-32 mm or 0-40 mm). We advise against brick rubble, as it pulverises over time.

2. LEVELLING LAYER

The levelling layer may consists of:

- + Sharp sand
- + Limestone or porphyry 2-4 mm, 1-3 mm, 0-4 mm

3. GRAVEL GRID

A deeper gravel grid provides a better load distribution onto the foundation.

4. TOP LAYER

The honeycomb structure should be covered with gravel (chip size 4-16 mm).

For finer gravel types this will be about 1 cm, for coarser types 2 cm.

SPECIFICATIONS

- ⊠ GRID DIMENSIONS 160 x 120 cm
 - GRID HEIGHT 4 cm (ECCOgravel 40)
 - 3 cm (ECCOgravel 30)
- ∅ DIAMETER honey comb 43 mm
- DENSITY HDPE 0,95 g/cm³
- ⊞ MATERIAL honey comb 100% HDPE (high-density polyethylene)
- ↑↑↑ COLOUR white, grey or black
- ⚖ COMPRESSIVE STRENGTH EMPTY ISO 844 - 90 tonnes per square metre
- ⚖ COMPRESSIVE STRENGTH FULL ISO 844 - up to 400 tonnes per square metre
- ⚙ APPLICATIONS
 - + Driveways and parking areas
 - + Fire roads
 - + Garden and foot paths, terraces
 - + Campsites, ...



ECCOdal is a strong grass grid

Made from recycled materials (PE-PP). The grass grid is equipped with internal expansion joints for absorbing thermal and mechanical tension.

INFO

- + Grass grid in PE-PP: high compressive strength, high impact value and frost-resistant
- + Quickly installed thanks to its convenient dimensions 80 x 80 cm
- + Creates a smooth surface which is perfectly walkable and driveable
- + Belgian quality product
- + Expansion joints to absorb temperature variations

APPLICATIONS

- + Green parking areas, driveways, carports
- + Walkways and garden paths, campsites
- + Fire roads, bank reinforcement
- + Paddocks, horse arena's, ...



INSTALLATION

1. FOUNDATION

The foundation case can consist of: lava, limestone rubble, porphyry rubble or crushed concrete rubble (chip size distribution: 16-32 or 20-40 mm). Hollow spaces (about 80%) should be filled with topsoil.

2. SUBSTRATE LEVELLING LAYER

The substrate levelling layer may consist of: lava (0-4 mm)

3. GRASS GRID

A deeper gravel grid provides a better load distribution onto the foundation.

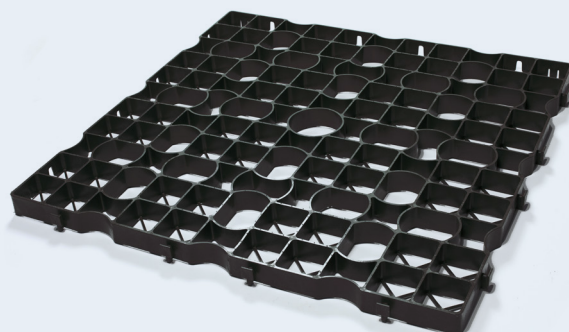
4. TOP LAYER

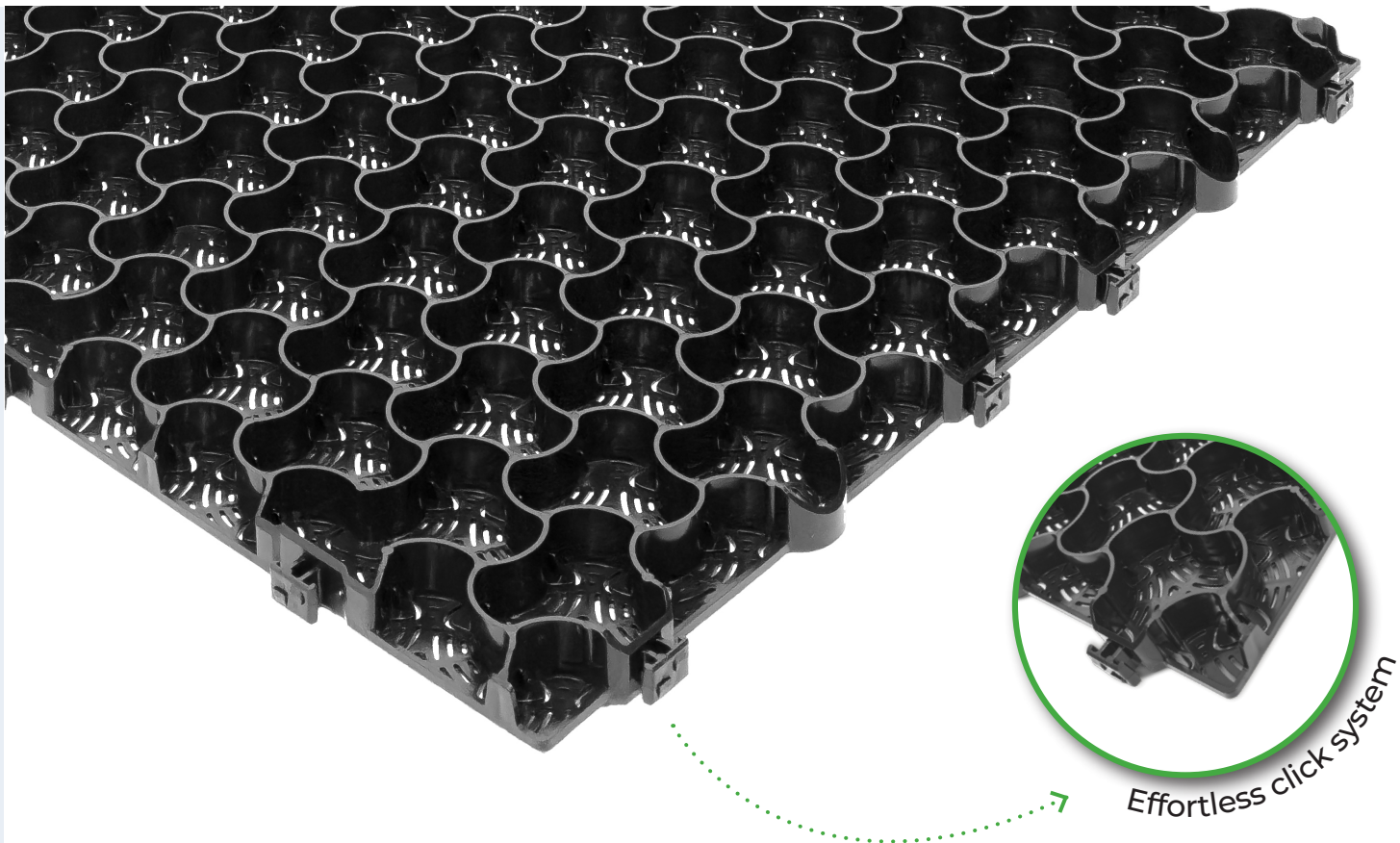
Add the substrate to the ECCOdal grass grids up to 1 cm (max 0.5 cm) from the edge of the grid (that way, the growing area of the grass is protected in the valley). Add the grass to the grass grids (preferably grass with long roots, e.g. *Festuca arundinacea*). You can use a self-compacting substrate, that way you no longer need to brush out anything as the substrate will compact naturally.

Every project is unique. These instructions are merely advisory.

SPECIFICATIONS

-  COMPOSITION -
100% recycled materials (PE-PP)
-  LENGTH (excl. connections) - 80 cm
WIDTH (excl. connections) - 80 cm
HEIGHT - 4 cm or 5 cm
-  WEIGHT PER GRID - 3,172 kg (4 cm) or
3,904 kg (5 cm)
-  SIDE THICKNESS - 0,35 - 0,40 cm
-  COLOUR - green with grey or black nuances





MULTIDAL
ECCO PRODUCTS

Frost-resistant gravel/grass grid in HDPE with high pressure resistance

Ideal for intensive and frequent traffic

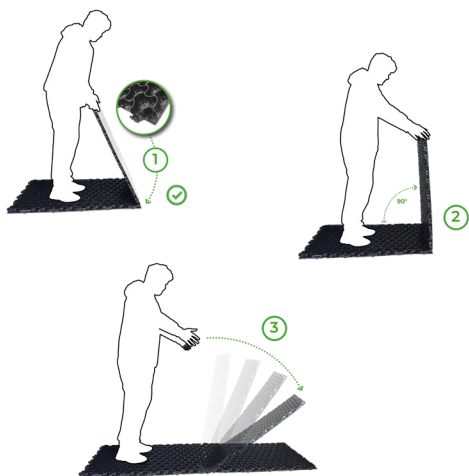
INFO

- + Ergonomic and fast installation thanks to the effortless click system
- + Designed for filling with grass or gravel
- + Suitable for all gravel types with a fraction up to 25 mm
- + Resistant to high pressure: withstands heavy loads
- + Ideal for intensive and frequent traffic
- + Closed bottom for stability, yet highly permeable
- + Sustainability: 100% recyclable HDPE
- + Suitable for sloping areas
- + Maintenance-friendly
- + Available in 2 colours: black (100% recycled material) or white



INSTALLATION

1. Position the first Multidal parallel to the demarcation.
2. With the new click system, you easily connect the next grid. If you need to, you can also disconnect it.
3. We recommend to install the grids in half-brick bond. Start the second row with half a slab, the Multidal is easy to cut with a grinding wheel.
4. Start the third row again with a full grid. Finish the entire surface in this way so the installation is half-brick.



SPECIFICATIONS

-  COMPOSITION:
100% HDPE - High Density Polyethylene
-  DIMENSIONS: 113.2 x 78.3 cm (0.89m²)
HEIGHT: 3 cm
-  BREAKING STRAIN, UNFILLED:
300+ ton/m²
-  WEIGHT: 3,75 kg
-  COLOUR: black or white





ECCOMARKERS

ECCO PRODUCTS

The perfect solution for demarcating your parking space
in a clear and modern way

ECCODAL MARKERS

ECCO PRODUCTS

APPLICABLE WITH ECCODAL



Rectangular fit for application with ECCOdal.
The markers are specifically designed to clip firmly in the grid.



ECCOGRAVEL MARKERS

ECCO PRODUCTS

APPLICABLE WITH ECCOGRAVEL



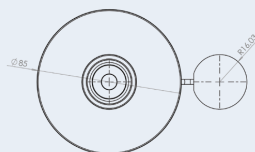
ECCOmarkers are always delivered with an accompanying screw (suitable for fixing in screed, stabilised sand or concrete).

SPECIFICATIONS ECCOGRAVEL MARKERS

✂ DIMENSIONS

Marker: \varnothing 85 mm (cover cap: \varnothing 32 mm)

Screws included: TX30 7,5 x 212 mm



⇅ COLOUR: white and black
Made of polypropylene carbonate (PPC)

⚙ The screws included are galvanised.

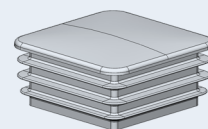
ECCOmarkers are always delivered with an accompanying screw (suitable for fixing in screed, stabilised sand or concrete). Around 8 to 10 markers are needed per parking space.

SPECIFICATIONS ECCODAL MARKERS

✂ DIMENSIONS 74 mm x 74 mm
(top of the marker)

⇅ COLOUR: white

⚙ Made of polypropylene carbonate (PPC)





ECCODAL HD FLEX

ECCO PRODUCTS

ECCodal HD Flex is a solid and flexible grass grid

Made from recycled materials (PE-PP)

INFO

- + Ecological: 100% recycled and 100% recyclable
- + Unique and innovative shape for an aesthetic and uniform result after installation
- + Cell structure can perfectly absorb all thermal expansions
- + Thicker cell walls for increased torque resistance
- + More than 6 strong connections per meter between the grids
- + Large contact area at the bottom ensures better load distribution
- + Can also be placed in running bond for extra strength of the entire structure

APPLICATIONS

- + Driveways with grass and parking places
- + Fire roads
- + Walkways and garden paths
- + Campsites, paddocks, horse arena's, ...



INSTALLATION

1. FOUNDATION

The foundation case can consist of: lava, limestone pebbles, porphyry pebbles or crushed concrete rubble (chip size distribution: 16-32 or 20-40 mm). Hollow spaces (about 80%) should be filled with topsoil.

2. SUBSTRATE LEVELLING LAYER

The substrate levelling layer may consist of: lava (0-4 mm)

3. GRASS GRID

The grass grid provides a better load distribution onto the foundation.

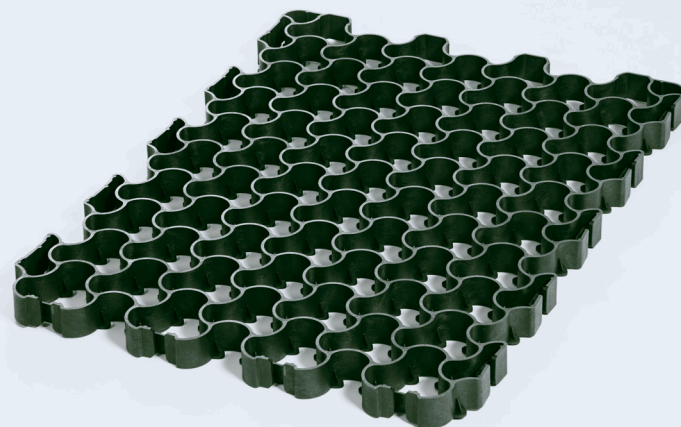
4. TOP LAYER

Add the substrate to the ECCOdal grass grids up to 1 cm (max 0.5 cm) from the edge of the grid (that way, the growing area of the grass is protected in the valley). Add the grass to the grass grids (preferably grass with long roots, e.g. *Festuca arundinacea*). You can use a self-compacting substrate, that way you no longer need to brush out anything as the substrate will compact naturally.

Every project is unique. These instructions are merely advisory.

SPECIFICATIONS

- ✚ COMPOSITION -
100% recycled materials (PE-PP)
- ✂ LENGTH (excl. connections) - 78,5 cm
WIDTH (excl. connections) - 58,5 cm
HEIGHT - 4 cm
- ↑↑ COLOUR - green with grey nuances





DRAINBASE

ECCO PRODUCTS

Modular drainage tile system

Applicable with artificial grass in gardens, rooftop terraces and playgrounds

INFO

- + Optimal load distribution thanks to large contact surface
- + Manufactured from HDPE material - high flexibility, even in cold temperatures
- + Water buffering capacity of 30 litres/m²
- + 9 flexible zones to maintain contact with the surface
- + Anti-slip system to ensure that the artificial turf stays in place
- + Unique connection system allows the plates to shrink and expand within their own dimensions

APPLICATIONS

- + Artificial grass in the garden and landscaping
- + Highly suitable for roof terraces
- + Playgrounds



ACCESSORIES

FIXATION CAPS





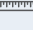



The artificial grass can be fixed at any position with the provided mounting caps and accompanying screws.

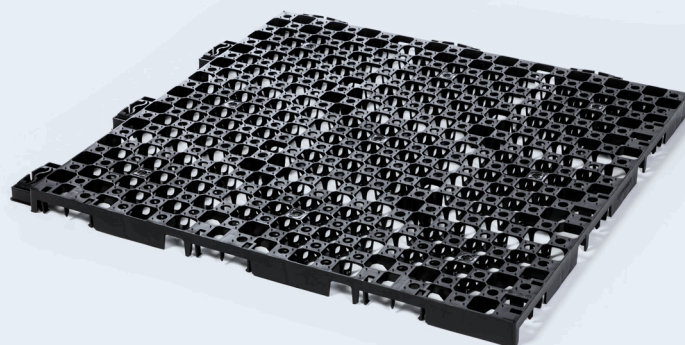
DRAINBASE BORDERS



ECCO Drainbase Borders are specifically designed to provide the finishing touch to your project. The border system prevents the grass edges from curling up and stops vermin from accessing the grid as the sides are neatly closed off.

SPECIFICATIONS

-  COMPOSITION - 100% recycled HDPE (high-density polyethylene) and 100% recyclable
-  TILE DIMENSIONS 60 X 60 cm = 0,36 m²/tile
-  GRID HEIGHT - 30 mm
-  TILE WEIGHT - 917 gram // 2,55 kg per m²
-  WATERBUFFERING CAPACITY 30 liter/m²
-  COLOUR - black





1CONNECT

ECCO PRODUCTS

COLOURS



NEUTRAL



STONE GREY



BASALT

Ready-to-use weed-free joint filler for LIGHT TRAFFIC

Vaccum-packed



INFO

- + Prevents weed growth in (paving) joints
- + Water-, air- and gas-permeable
- + Apply in dry weather
- + Applicable to both new and existing paving
- + Durable and maintenance-friendly
- + UV- and frost-resistant, road salt resistant
- + Eco-friendly
- + User-friendly!



Joints from 2 mm
wide and 3 cm deep



Water-, air- and
gas-permeable



100% frost-resistant



Sustainable and
eco-friendly



INSTRUCTIONS

STEP 1: Preparation

All joints should be sprayed out at least 3 cm deep, then filled with Iconnect.

STEP 2: Application


Open the vacuum bag and spread Iconnect over the wet sprayed area.

STEP 3: Sweeping

Sweep the sand into the joints with light pressure using a hard broom or squeegee. Be sure to keep the paving wet while sweeping. After 10 to 30 minutes, sweep diagonally with a soft broom until the pavement is clean.




SPECIFICATIONS

 COMPOSITION : Ready-to-use polymeric sand

 JOINT WIDTH: min. 2 mm

DRYING TIME: 24 h - 72 h
at a temperature of 20 degrees

PACKAGING: vacuum packed

 MIN. OUTSIDE TEMPERATURE AT INSTALLATION:
> 5°C and < 30°C

APPLICATIONS

Suitable for paving with **light traffic loads**:

- + Traffic-free shopping streets
- + Walkways and bike path
- + Garden paths
- + Terraces
- + Private parking places





2CONNECT

ECCO PRODUCTS

Weed-free joint filler for HEAVY traffic

Epoxy based



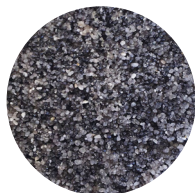
COLOURS



NEUTRAL



STONE GREY



BASALT

INFO

- + Prevents weed growth in (paving) joints
- + Water-, air- and gas-permeable
- + Application possible in wet and dry weather
- + Applicable to both new and existing paving
- + Durable and maintenance-friendly
- + UV- and frost-resistant, road salt resistant
- + Eco-friendly
- + User-friendly!



Joints from 5 mm wide
and 3 cm deep



Water-, air- and
gas-permeable



100% frost-resistant



Sustainable and
eco-friendly



INSTRUCTIONS

STEP 1: Preparation

Clean the paving and joints so that all weeds and dirt are removed.

STEP 2: Mixing

Mix components A and B with the quartz sand for 2 to 3 minutes. Then add up to a maximum of 1.5 litres of water to the mixture and mix again for 3 minutes.

STEP 3: Application

Pour the ECCO 2Connect joint filler onto the paving that has been moistened beforehand. Sweep the joint filling into the joints with a hard broom or rubber squeegee.

STEP 4: Sweeping

After 10 to 30 minutes, sweep diagonally with a soft broom until the pavement is clean. We recommend testing out the joint filler on a small area in advance.




SPECIFICATIONS

 COMPRESSIVE STRENGTH: 21 N/mm²

TENSILE STRENGTH: 6,1 N/mm²

 JOINT WIDTH/DEPTH: min. 5 mm, min. 3 cm

DRYING TIME: 24h - 48 h
at a temperature of 20 degrees

 MIN. OUTSIDE TEMPERATURE AT INSTALLATION:
> 5°C and < 30°C

APPLICATIONS

Suitable for paving with **heavy traffic loads**:

- + Roundabouts
- + Cobblestone roads
- + Roads with wide joints





SECALFLOR

ECCO PRODUCTS

Natural panels for improved plant growth

Provides a valuable biomass substrate for healthy plant growth.

INFO

- + High water retention: absorbs up to 12 l/m² and helps plants survive long periods of drought
- + Contributes to soil improvement while maintaining water retaining capacity and drainage capacity
- + Improved plant growth thanks to water retention and provided nutrients
- + Sustainable and ecological: made from 100% natural raw materials
- + Very user-friendly: easy and quick to install
- + Low weight allows installation on garden sheds, bus shelters, etc.





FLAT ROOFS

SEDUMMIX MAT

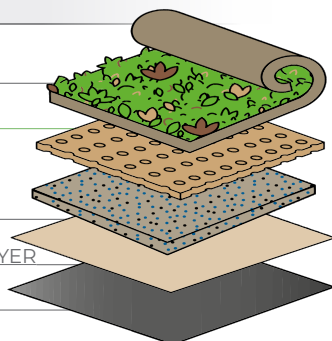
SECALFLOR

MINERAL LEVELLING- /

DRAINAGE LAYER

PROTECTIVE- / FILTERING LAYER

ANTI-ROOT CANVAS



SPECIFICATIONS

✂ DIMENSIONS (l x w x h): 79 x 58 x 2,5 cm

🔗 MATERIAL: 100% natural resources

💧 WATER RETENTION: 12 l/m²

⚖ WEIGHT: 2 kg/m² (unsaturated)

APPLICATION

- + Green roofs (intensive and extensive)
- + Construction of parks and green areas
- + Fruit and vegetable growing in arid areas
- + Erosion control, soil remediation, ...

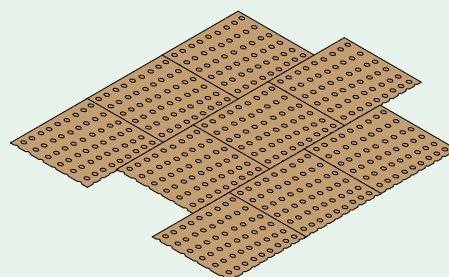
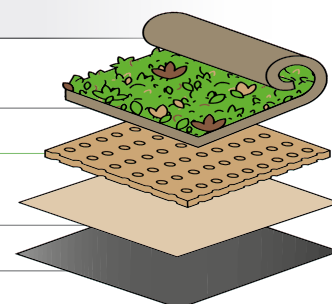
PITCHED ROOFS

SEDUMMIX MAT

SECALFLOR

PROTECTIVE- /
FILTERING LAYER

ANTI-ROOT CANVAS





ECCOSEDUM

ECCO PRODUCTS

Ready-made green roof tiles

ECCOsedum trays can be placed on flat roofs and pitched roofs

INFO

- + Easy to handle: installation of the green roof is very simple and can be done by 1 person.
- + Low weight per m²: +/- 80 kg/m² depending on whether it is saturated or not.
- + The system can therefore be applied to almost any existing roof.
- + Installation can take place all year round. Unlike a direct installation where you have to avoid the winter and summer periods.
- + Easily removable if needed, e.g. for water infiltration or roof work.
- + Consistent substrate thickness. As opposed to a solid green roof where the thickness can vary between 1 and 8 cm, causing weed growth
- + Smoothed out pressure points on the side of the tray allowing better pressure distribution, in contrast to other ready-made systems that do not have this feature.





INSTALLATION

1. VEGETATION LAYER

The ECCOsedum system contains at least 7 kinds of sedum and is fully rooted (avoiding weed growth).

2. SUBSTRATE LAYER

The substrate layer provides nutrients and water for the vegetation, but also provides oxygen and root anchoring.

3. WATER RETENTION LAYER

Water retention helps plants survive dry periods. The bottom half of the tray ensures that rainwater is retained.

4. DRAINAGE LAYER

The drainage layer allows excess rainwater to run off the roof membrane.

SPECIFICATIONS



FULLY PRE-CULTIVATED

READY-MADE GREEN ROOF TRAYS

COMPOSITION TRAYS: Polyolefines
(100% recycled HDPE, PP and LDPE Mix)

UV-LIGHT: The trays are provided with a UV stabiliser



WEIGHT per tray: +/- 16 kg/tray
per m²: +/- 80 kg/m²



DIMENSIONS (l x w x h)
45 cm x 49,5 cm x 8,5 cm (4,4 tiles/m²)



BEE-FRIENDLY



EASYFIX
ECCO PRODUCTS

Quick and easy to install borders

In high-quality Galva or Cor-ten steel for all your garden projects

INFO

- + Easyfix LI (linear) can be used in straight lines as well as in slightly sloping shapes and right angles
- + The Easyfix CS (custom shape) is extremely pliable and adaptable to all possible shapes
- + Quick and easy to install using a hammer
- + Random anchoring according to your design
- + Curved top edge for optimum safety in use without sharp edges
- + Long anchoring pins provide improved stability
- + Limited visibility of fixing material after installation



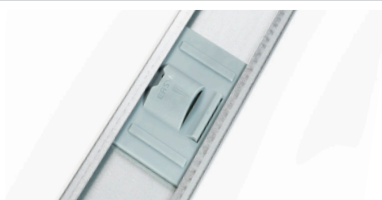
INSTALLATION

EASYFIX BORDER



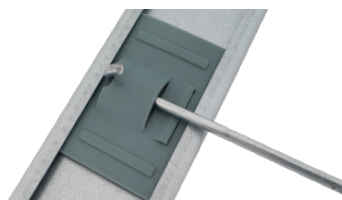
For straight lines (LI) as well as curved shapes (CS)

EASYFIX POCKET



The movable pockets can be placed randomly

EASYFIX ANCHOR



Solid anchoring through long anchoring pins

SPECIFICATION



TYPES:

Easyfix LI (straight lines) / Easyfix CS (custom shape)

Galva 0,8 mm and Cor-ten steel 1 mm

10 cm or 15 cm height

Easyfix LI is also available in black powder coating



DIMENSIONS (l x w x h)

Easyfix 100 Galva: 240 x 0,08 x 10 cm

Easyfix 100 Corten: 240 x 0,10 x 10 cm

Anchor height Easyfix 100: 34 cm

Dimensions pocket 100: 12 x 9,6 cm

Easyfix 150 Galva: 240 x 0,08 x 15 cm

Easyfix 150 Corten: 240 x 0,10 x 15 cm

Anchor height Easyfix 150: 34 cm

Dimensions pocket 150: 12 x 14,6 cm



APPLICATIONS

Suitable for all areas not driven on, such as paved surfaces, patios, flower beds, lawns, vegetable gardens, ...



METALFLEX
ECCO PRODUCTS

Metalflex is a border in galvanised steel

Available in L-shape in 4 heights

INFO

- + Easy to use
- + Quick and easy to install
- + Flexible: suitable for straight and curved lines
- + Available in 4 heights: 4,5 cm, 6 cm, 8 cm or 10 cm
- + Rounded top edge for optimal safety
- + Made from durable materials
- + Great in combination with ECCOgravel





INSTALLATION

- + Determine the trace
- + Bend in the right shape if needed
- + Fix the border in the ground with the anchor nail at approximately every 80 cm

RECOMMENDATIONS

- + For heavier loads (e.g. side of driveway), concrete is recommended.
- + Metalflex H45 and H60 are particularly suitable in combination with ECCOgravel. The height of the borders perfectly matches with the height of the grids + the finishing layer. This way, the edge of the border is barely visible.

SPECIFICATIONS



DIMENSIONS

Metalflex H45: 240 cm x 0,10 cm x 4,5 cm

Metalflex H60: 240 cm x 0,10 cm x 6 cm

Metalflex H80: 240 cm x 0,10 cm x 8 cm

Metalflex H100: 240 cm x 0,10 cm x 10 cm



MATERIAL: galvanised



APPLICATIONS:

Borders for all soft and paved surfaces:

- + Asphalt
- + Gravel surfaces
- + Clinker bricks
- + Bricks
- + Tiles
- + ...



BETOTOP
ECCO PRODUCTS

High quality profiles

in Cor-ten steel for an elegant finish to concrete curbs

INFO

- + Suitable for new projects and updating existing curbs
- + Long lifespan
- + Low maintenance
- + Easy installation
- + Various combination possibilities
- + Elegant finish
- + Concrete curb is protected
- + Levels out any height differences between the concrete curbs
- + Self-locking
- + High quality product made from Cor-ten steel





Length	Width	Height	Thick- ness	Shape
BETOTOP 50 COR-TEN				
200 cm	5 cm	6 cm	0,1 cm	U-shape
BETOTOP 60 COR-TEN				
200 cm	6 cm	5,5 cm	0,1 cm	U-shape
BETOTOP SPECIAL				
200 cm	6 cm	20 cm	0,1 cm	U-shape

BETOTOP Special is a variant that fits perfectly on concrete curbs of 6 cm top width and a visible side of 20 cm.



SPECIFICATIONS



AVAILABLE IN:

Cor-ten steel



DIMENSIONS

U-profile 50

U-profile 60

U-profiel 60x200



APPLICATIONS

Suitable for all areas not driven on:

- + Garden path
- + Pond edge
- + Terraces
- + Flower beds and lawns

As well as suitable for areas used for driving:

- + Driveways
- + Parking spaces
- + Access roads



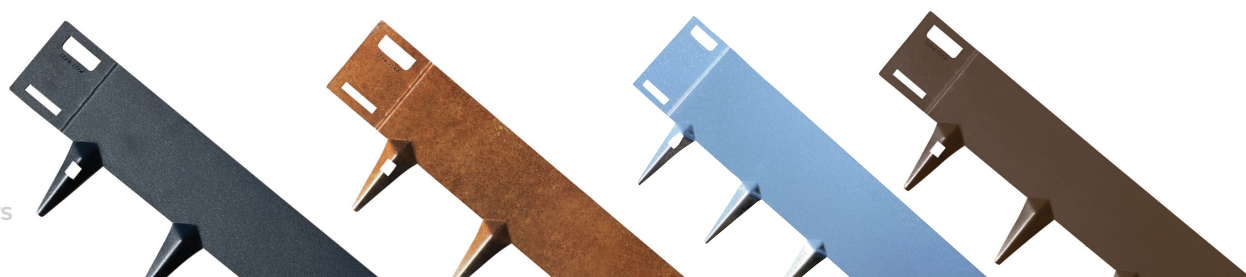
CORE EDGE
powered by **ECCO** PRODUCTS

Flexible and user-friendly borders

Available 4 versions and 3 heights

INFO

- + Strong and flexible
- + Can be used in both straight lines and curved shapes or corners
- + Weatherproof
- + Easy to install without special tools
- + Double attachment ensures a safe and secure connection between two borders
- + Resistant to riding mowers, lawn mowers





INSTALLATION

- + Double attachment ensures a safe and secure connection between two borders, making installation quick and easy. A pair of pincers suffices to connect two borders.
- + The overall length is 1075 mm, which results in a connected length of 1000 mm.
- + The anchoring pins contain a unique fold in the middle, reinforcing the ground anchor and making it suitable for use in heavier soil.



SPECIFICATIONS



TYPES:

- + Galva
- + Cor-ten steel
- + Black (RAL9005)
- + Brown (RAL8028)



MATERIAL: Flexible steel



DIMENSIONS:

Front	Spikes	Weight
65 mm	85 mm	1.04 kg
100 mm	95 mm	1.42 kg
150 mm	115 mm	2.25 kg



APPLICATIONS:

- + Lawn and border edges
- + Finishing of paths and terraces
- + Flower beds or vegetable garden



ECCOBORDER FLEX

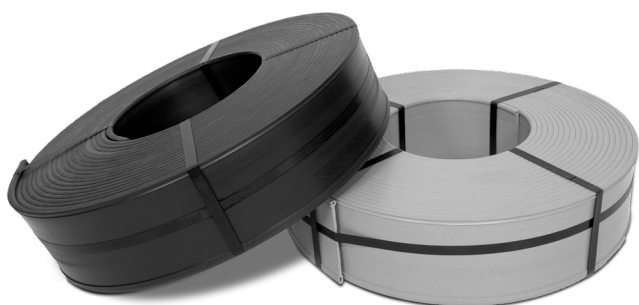
ECCO PRODUCTS

Durable and budget-friendly borders

Made from recycled PVC

INFO

- + Easy to install border on roll
- + Available in 2 colors
- + Manufactured from recycled PVC and 100% recyclable
- + Optimal handling thanks to tongue and groove function
- + To be fitted with rounded or flat finishing edge on top
- + Excellent price-quality ratio
- + Economical alternative to wooden or metal edgings





INSTALLATION

- + Fastening by means of Multi Profile anchoring



SPECIFICATIONS

✚ MATERIAL: recycled PVC

⇅ COLOR: black or grey

✂ HEIGHT: 14 cm

LENGTH ROLL: 25 cm

WIDTH: 4,5 mm, top and bottom edge 8 mm

⚙ APPLICATIONS

Suitable for a wide range of applications:

- + Turf edging
- + Edging of gravel paths
- + Flower bed, vegetable garden, ...
- + Pond edging



ECCOBORDER FLEX PANEL

ECCO PRODUCTS

Durable and budget-friendly borders

Made from recycled PVC

INFO

- + Easy to install 2m40 straight border
- + Ideal for sleek and straight edging and creating 90° angles
- + Available in 2 colours
- + Manufactured from recycled PVC and 100% recyclable
- + To be fitted with rounded or flat finishing edge on top
- + Excellent price-quality ratio
- + Fastening by means of Multi Profile anchoring
- + Economical alternative to wooden or metal edgings





INSTALLATION

- + Fastening by means of Multi Profile anchoring



SPECIFICATIONS

✚ MATERIAL: recycled PVC

⬆⬆⬆ COLOR: black or grey

✂ HEIGHT: 14 cm

LENGTH PANEL: 2m40

WIDTH: 4,5 mm, top and bottom edge 8 mm

⚙ APPLICATIONS

Suitable for a wide range of applications:

- + Turf edging
- + Edging of gravel paths
- + Flower bed, vegetable garden, ...
- + Pond edging



MULTI PROFILE

ECCO PRODUCTS

Solid anchoring

Suitable for borders in all types of materials

INFO

- + Optimal anchoring and stability through alternating soil displacement
- + The cavities in the profiles provide a significant counterforce
- + Alternating profile structure results in better vertical guidance
- + Made from a recycled plastic mix that combines high impact strength and rigidity
- + No danger of milling out due to patented wall structure
- + The screw passes through 4 screw surfaces
- + Universal anchoring suitable for all types of borders



INSTALLATION

- + To be secured with self-drilling countersunk screws, length 45 mm (not included)
- + Always screw in on the flat side in the upper 18 cm



SPECIFICATIONS



MATERIAL: Recycled plastic mix



COLOUR: black



Available in 2 HEIGHTS: 38 cm and 58 cm

SCREW SURFACE: 18 cm



APPLICATIONS

Can be combined with any type of border



TREE BORDER

ECCO PRODUCTS

Tree Border / Tree Circles in Cor-ten Steel

Gives your tree the accent it deserves

INFO

- + Aesthetically pleasing
- + Easier and more economical maintenance
- + Avoids chemical weeding around the trunk
- + Available in 3 sizes
- + Simple, 'invisible' connection of 2 halves with accompanying installation material



INSTALLATION

- + The tree circles consist of 2 halves that can easily be put together using a plate and supplied bolts.
- + When the two halves are connected, push or hammer the tree circle into the ground.
- + Next, you can fill the area around the trunk with gravel, bark or any material of your choice.



SPECIFICATIONS



MATERIAL

Cor-ten steel



AVAILABLE IN 3 SIZES

50 CORTEN: Ø 500 mm, edge width 100 mm

75 CORTEN: Ø 750 mm, frame width 150 mm

100 CORTEN: Ø 1000 mm, edge width 200 mm



APPLICATIONS

FOR PLACEMENT AND INSTALLATION IN BOTH

- + semi-paved areas
- + (city) gardens
- + parks
- + gravel zones
- + paved areas
- + ...



TREE GUARD

ECCO PRODUCTS

The reliable tree protection

For the protection of trees from damage

INFO

- + Perforations allow the tree to get enough air, light and sun
- + No risk of fungal decay, as the tree can "breathe"
- + Corrosion- and weather-resistant
- + The non-perforated area of 10 to 15 cm at the bottom provides protection against mice and mowing damage
- + Effective protection against damage caused by biting, scraping or scratching animals



INSTALLATION

- + Easy and quick installation due to full-length cut-out.
- + Self-closing due to its own spring force.



SPECIFICATIONS

✂ MATERIAL: PVC (Polyvinylchloride)

✂ HEIGHTS: 80, 100, 120 AND 150 CM

COLOUR : GREEN

DIAMETER : 85 MM

⚙ APPLICATIONS

For the protection of

- + Deciduous trees
- + Fruit trees
- + Conifers
- + ...



ECC-O-BAG
ECCO PRODUCTS

Reusable tree water bag

Drip irrigation for trees

INFO

- + Drip-by-drip and consistent irrigation allows trees to absorb water better, without risk of the soil getting too wet
- + The tree remains better protected during periods of extreme drought
- + Easy to install thanks to zip system
- + Wide field of application: depending on the tree trunk diameter, 1 or several water bags can be zipped together per tree
- + Strong material: tear-proof and UV- and weather-resistant
- + Runtime: 7 - 10 hours





INSTALLATION

STEP 1: Preparation

Place the ECC-O-bag around the tree trunk (up to 30 cm in circumference). If the trunk circumference is larger, you can zip several bags together.

STEP 2: Zip up

Next, carefully close the zip(s).

STEP 3: Fill in

First fill the ECC-O-bag with 10 litres of water (1/6) and then briefly lift the bag by the black loops. This is important to prevent the water from flowing out of the bag. Then fill the bag completely. Only use clean water. Dirt particles may clog the water holes in the tree bag.



SPECIFICATIONS

✚ MATERIAL: REACH-certified PVC material

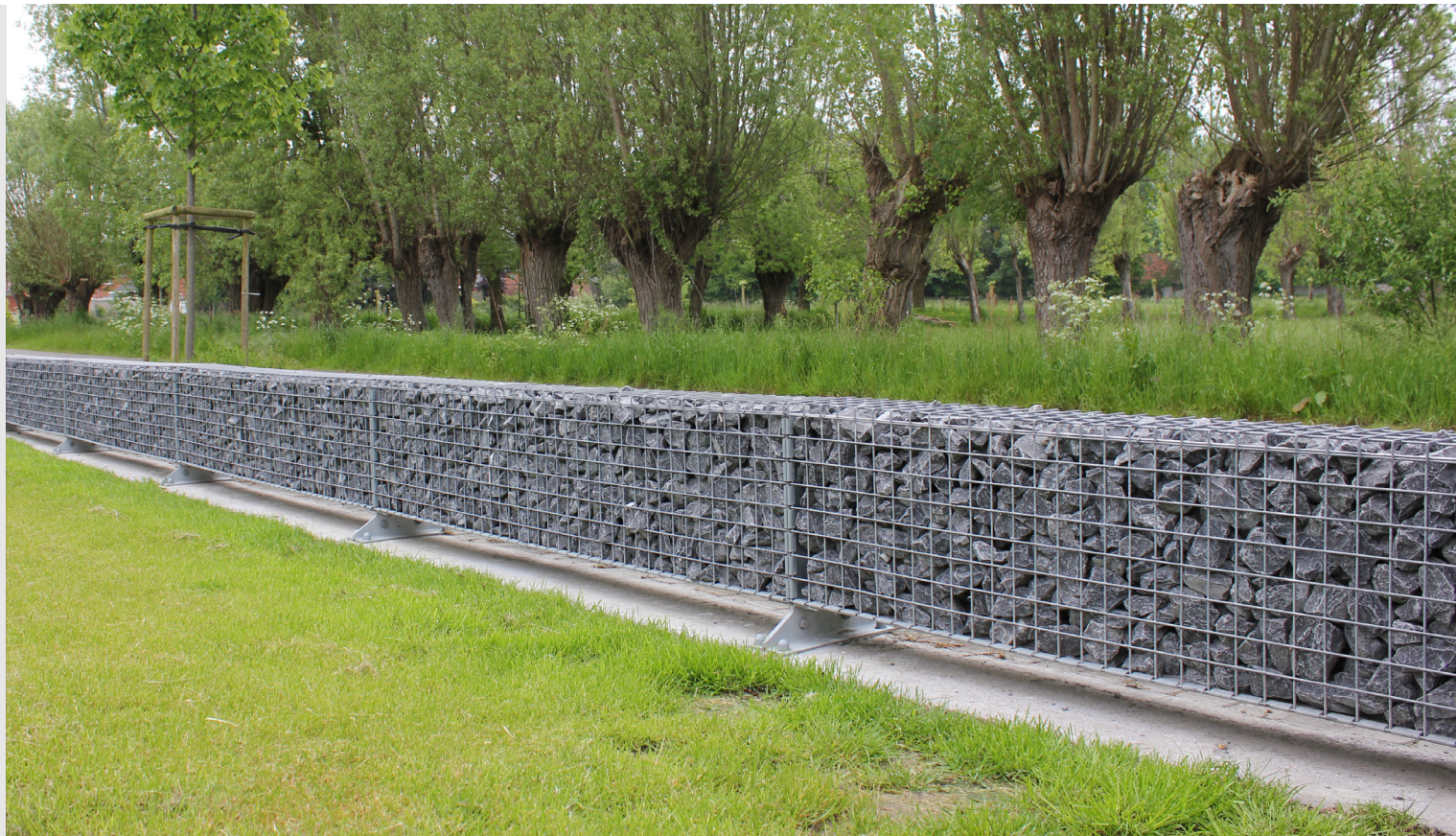
✚ 2 TYPES: light (460 g) and heavy (650 g)

⬆⬆ COLOUR: green

Capacity: 75 L

⚙ APPLICATIONS

- + To be used after planting or transplanting trees
- + Suitable for administering liquid tree fertiliser



ECCOFENCE KIT

ECCO PRODUCTS

A professional construction kit

To achieve a natural-looking enclosure.

INFO

- + Professional “all-in-one” kit
- + Corresponding kit bags available
- + Easy assembly thanks to enclosed layout plan + installation video
- + Easy to customise yourself
- + Little loss of space due to narrow width
- + Floating installation possible
- + Subtle transition between the baskets
- + Available in 4 heights
- + All bolts and nuts are included
- + Extra reinforcements for optimum safety





ACCESSORIES

+ Finishing net

A side net that causes the stones to be visible on the side.

+ Foot 90°

This foot can be used to place the baskets at an angle

+ Raised feet

Specially designed to absorb height differences of up to 5% if the baskets are placed on a sloping surface.

+ Filling

Corresponding Kit Bags available. The ideal calibre to fill an ECCOfence KIT is between 40 mm and 100 mm, depending on the shape of the stones. The required fill expressed in m^3 is :

ECCOfence KIT 50: 0,17 m^3

ECCOfence KIT 100: 0,38 m^3

ECCOfence KIT 150: 0,59 m^3

ECCOfence KIT 200: 0,80 m^3

SPECIFICATIONS



DIMENSIONS: (l x h x w)

KIT 200: 201 x 200 x 20 cm

KIT 150: 201 x 150 x 20 cm

KIT 100: 201 x 100 x 20 cm

KIT 50: 201 x 50 x 20 cm

Length is adjustable by 5 cm.



APPLICATIONS

- + Closures
- + Terraces
- + Retaining walls
- + Advertising
- + Separation wall



ECCOFENCE ALUBOX

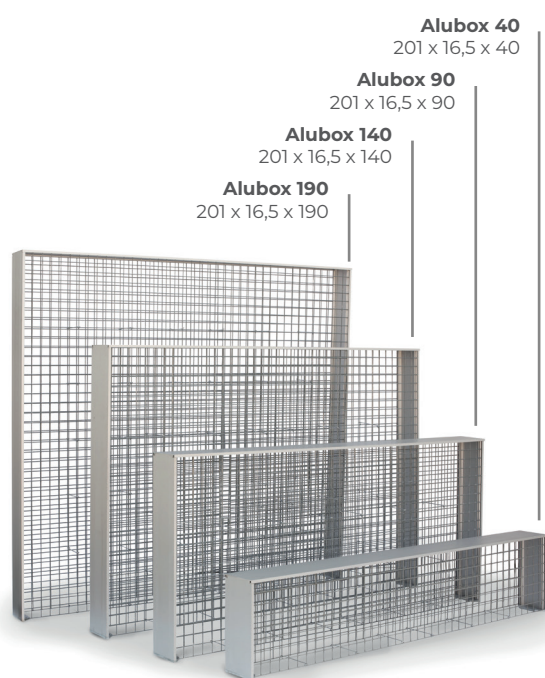
ECCO PRODUCTS

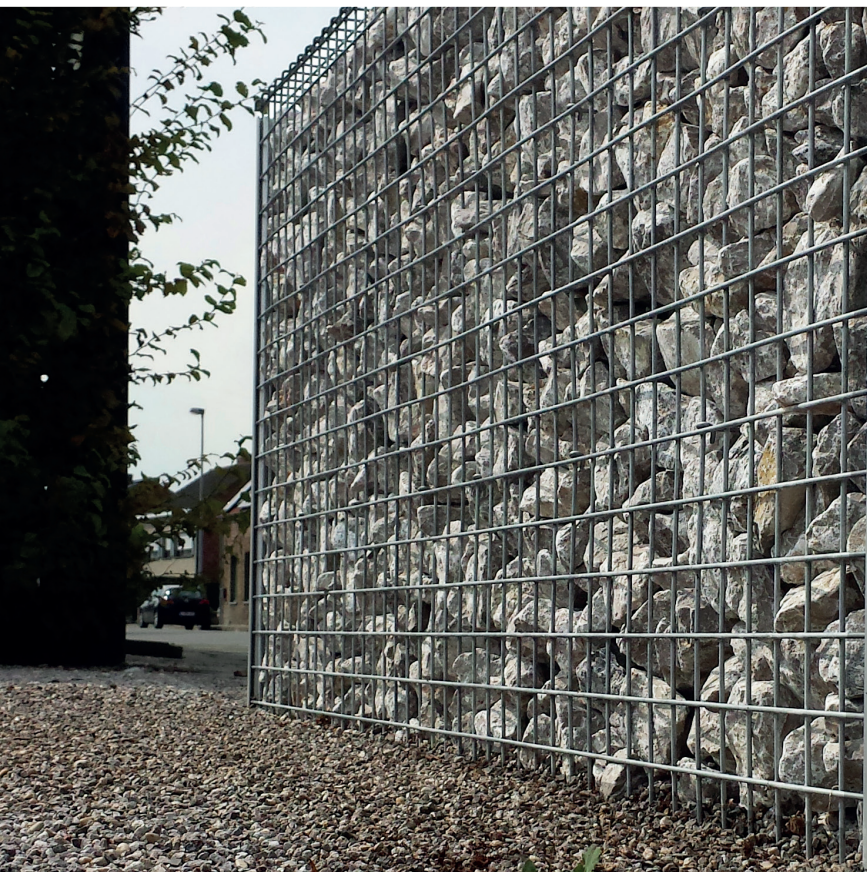
A trendy gabion

Made from aluminium

INFO

- + Professional construction kit
- + Can be assembled and filled on site
- + Simple assembly
- + Easy to customise
- + Little loss of space due to narrow width
- + Design look thanks to aluminium
- + Choice of various finishes
- + Multiple applications: benches, partitions,...





ACCESSORIES

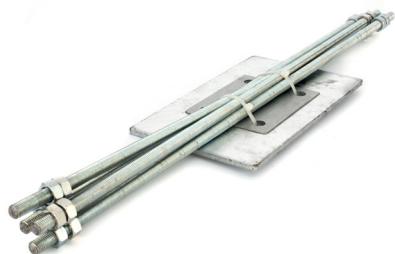
- + Choice of aluminium upper profile or upper net
- + Installation with expansion bolts : 4 M12 expansion bolts per gabion. The expansion bolts must be sufficiently anchored in concrete (min. 350 kg cement/m³).
- + Installation with ground anchor : 1 ground anchor for each gabion + 1 extra ground anchor for the first gabion.
- + The ideal calibre for filling the ECCOfence ALU-BOX is between 40 mm and 90 mm, depending on the shape of the stones. The required filling expressed in m³ is :

ECCOfence Alubox 40: 0,14 m³

ECCOfence Alubox 90: 0,31 m³

ECCOfence Alubox 140: 0,49 m³

ECCOfence Alubox 190: 0,66 m³



SPECIFICATIONS

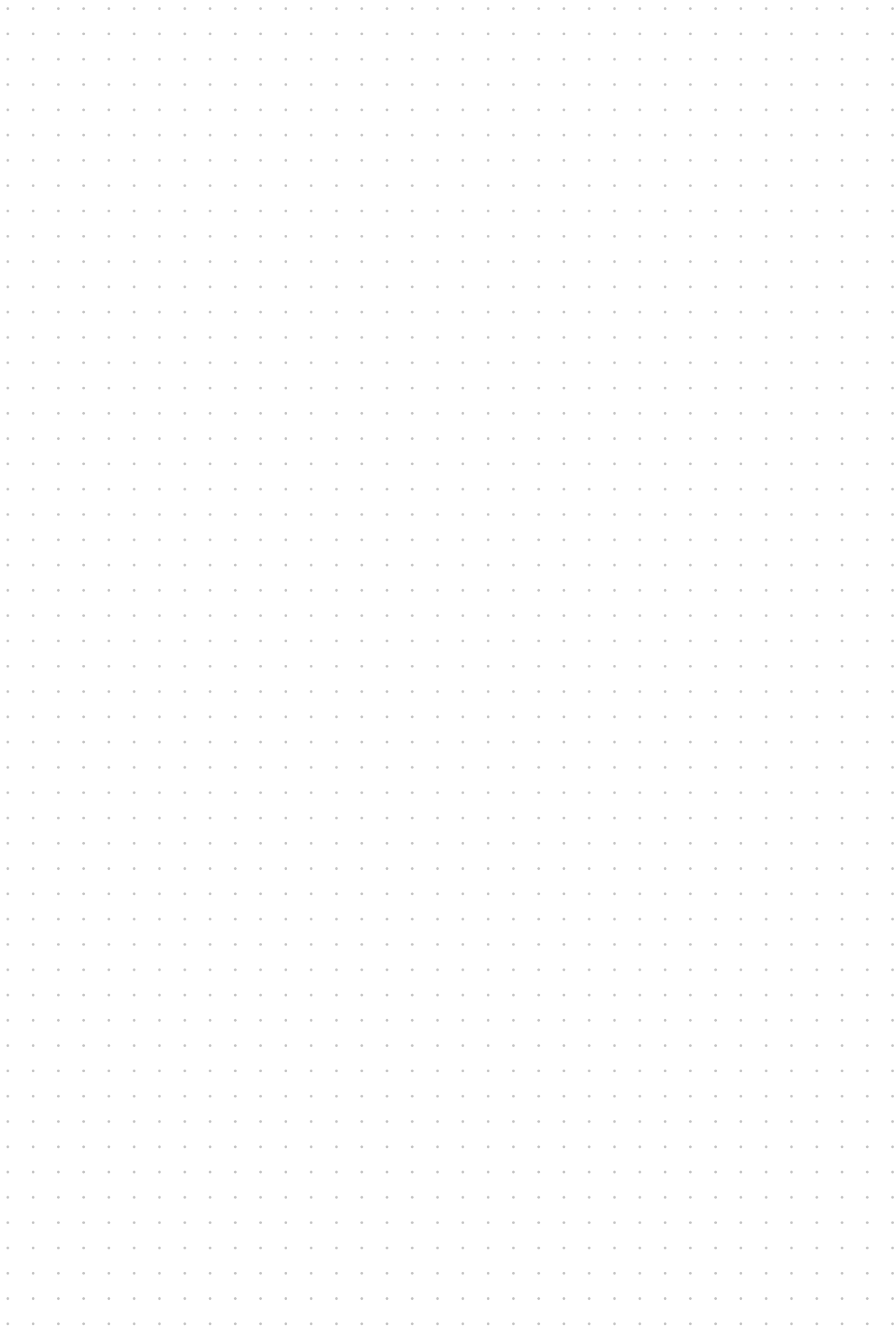
✕ DIMENSIONS:

ECCOfence Alubox is the narrowest gabion in our range. The Alubox is only 16.5 cm wide.

As such, it involves almost no loss of space and is still very solid thanks to its concrete anchoring. It also means you need less filling, resulting in cost savings.

⚙ APPLICATIONS:

- + Closures
- + Terraces
- + Publicity
- + Advertising
- + Garden bench/garden table (thanks to aluminium upper profile)



ECCO PRODUCTS opts for sustainable printing on recycled paper.



COMPANY AND
CONTACT INFORMATION

ECCO PRODUCTS

Poelstraat 167 - 9820 Merelbeke
Belgium

+32 9 247 00 25
info@eccoproducts.eu

