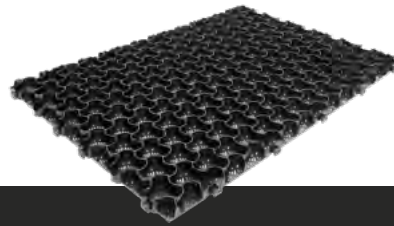




INSTALLATION WITH GRAVEL



MULTIDAL



Frost-resistant gravel/grass grid in HDPE with high pressure resistance

Excavation

Perform the necessary excavation works. Always remove the topsoil to load-bearing soil. The load-bearing capacity of this layer should be at least 20 Mpa.

Borders

Install the borders. They should be 2 cm above the level of the top of the grid.

Only for cars

Foundation

Place the foundation/sub-foundation at a depth of at least 25 cm. Work in layers of 20 cm at the most, and compact with a plate compactor. The foundations may consist of limestone rubble, porphyry rubble, or crushed concrete rubble (chip size: 0-32 mm or 0-40 mm).

Levelling layer

Add the fine gravel, compact and level. The depth of the levelling layer for vehicular applications must be 5 cm, for non-vehicular applications 15 cm. The levelling layer may consist of limestone or porphyry (chip size: 2-4 mm, 1-3 mm, or 0-4 mm) or sieved sand.

Multidal

- a. Position the first Multidal parallel to the demarcation.
- b. With the new click system, you easily connect the next grid. If you need to, you can also disconnect it.
- c. We recommend to install the grids in half-brick bond. Start the second row with half a slab, the Multidal is easy to cut with a grinding wheel.
- d. Start the third row again with a full grid. Finish the entire surface in this way so the installation is half-brick.

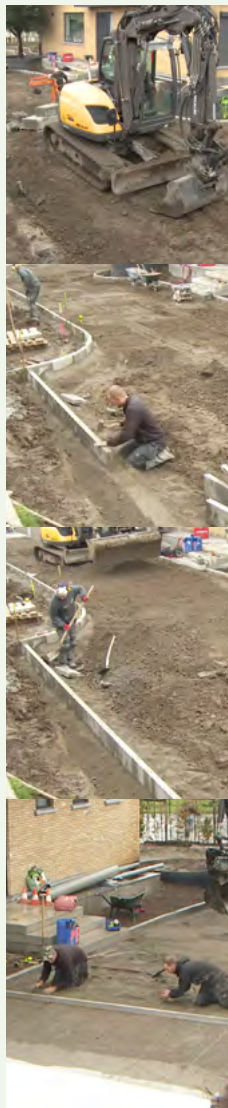


Gravel

Add the gravel. Do not drive on unfilled grids. Level with a shovel, brush, rake, and squeegee. Do not compact the ornamental gravel. Allow the gravel to exceed the grids by 1 to 2 cm (1 cm for finer and 2 cm for coarser types of gravel). Check and level a few weeks after initial use. Add gravel where necessary. Sinking will no longer occur.

Additional advice

- » We advise against using brick rubble as a foundation, as it pulverises over time.
- » For vehicular applications, we recommend a chip size of 8 to 25mm (smaller types of gravel get stuck in tire treads, while larger chip sizes are aesthetically less pleasing). For non-vehicular applications we recommend a chip size of 4 to 25mm (smaller types of gravel will pulverise over time).



01

02

03

04

05

06